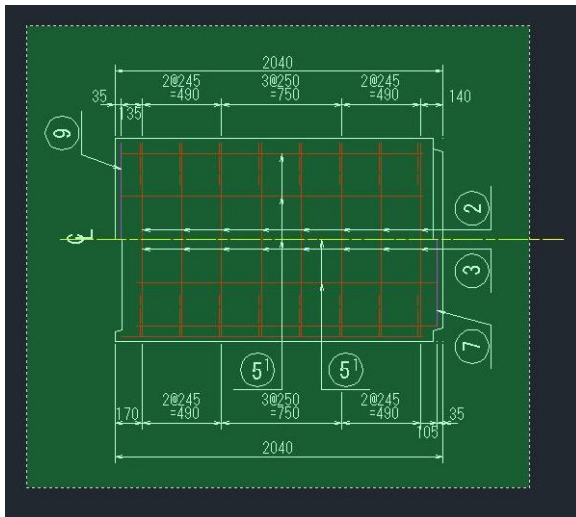
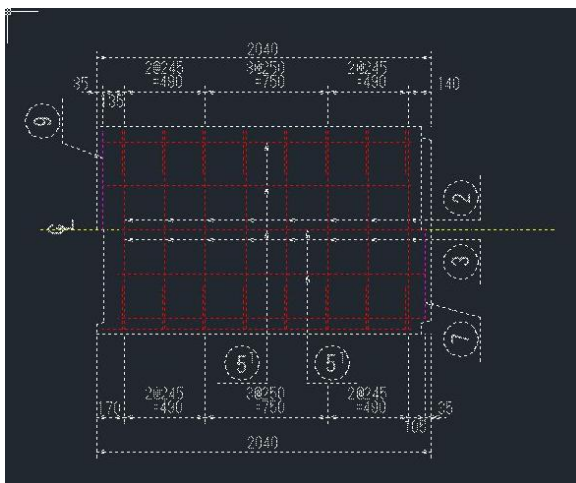


選択



選択図形が無ければ、右クリック（または Enter）



指定ファイルに、結果が保存されます。(図形文字、数量、延長)

2,8,1200

3,8,1200

51,3,1875

51,2,3130

7,1,535

9,1,600

指定ファイル+拡張子(TXT)に、集計元項目が保存されます。

(図形文字、座標値、延長、画層名、色名、線種名)

2,	1715,	7342,	1715,	6142,	1200,D-STR,,
2,	1960,	6142,	1960,	7342,	1200,D-STR,,
2,	2205,	6142,	2205,	7342,	1200,D-STR,,
2,	2455,	6142,	2455,	7342,	1200,D-STR,,
2,	2705,	6142,	2705,	7342,	1200,D-STR,,
2,	2955,	6142,	2955,	7342,	1200,D-STR,,
2,	3200,	6142,	3200,	7342,	1200,D-STR,,
2,	3445,	7342,	3445,	6142,	1200,D-STR,,
3,	1715,	7342,	1715,	6142,	1200,D-STR,,
3,	1960,	6142,	1960,	7342,	1200,D-STR,,
3,	2205,	6142,	2205,	7342,	1200,D-STR,,
3,	2455,	6142,	2455,	7342,	1200,D-STR,,
3,	2705,	6142,	2705,	7342,	1200,D-STR,,
3,	2955,	6142,	2955,	7342,	1200,D-STR,,
3,	3200,	6142,	3200,	7342,	1200,D-STR,,
3,	3445,	7342,	3445,	6142,	1200,D-STR,,
51,	1580,	7277,	3455,	7277,	1875,D-STR,,
51,	1580,	7012,	3455,	7012,	1875,D-STR,,
51,	1675,	6472,	3550,	6472,	1875,D-STR,,
51,	1205,	6742,	4335,	6742,	3130,D-BMK,,
51,	1205,	6742,	4335,	6742,	3130,D-BMK,,
7,	3550,	6742,	3550,	6207,	535,D-STR-STR2,,
9,	1335,	7272,	1700,	7231,	367,D-STR-HTXT,,