

サンプル調整池

I . 計算条件

1. 降雨強度式

$$R = \frac{2,590.000}{t^n + 12.900}$$

※n = 3 / 4

補正係数 = 1.00

降雨強度式: 短時間降雨強度式

降雨波形: 後方集中型波形

2. 降雨時間

降雨継続時間: 24 時間

計算時間間隔(t): 20 分

計算打切り時間: 50 時間

3. 集水面積と流出係数

集水面積 = 247.900 ha

流出係数 = 0.840

I . 計算条件

4. 流域別の集水面積と流出係数

| 流域No | 面積(ha) | 流出係数 |
|------|---------|-------|
| 1 | 198.320 | 0.900 |
| 2 | 49.580 | 0.600 |

Ⅱ. 調整池諸元

1. オリフィス形状

オリフィス 敷き 高 (HL) = 24.000 m

オリフィス 幅 (BL) = 0.900 m

オリフィス 高 (DL) = 0.900 m

流 量 係 数 (C1) = 0.60

流 量 係 数 (C2) = 1.80

2. 洪水吐き形状

洪水吐き敷き高 (HWL) = 34.000 m

洪水吐き 幅 (B) = 10.000 m

流 量 係 数 (C3) = 1.80

3. 許容放流量

許 容 放 流 量 = 6.000 m³/sec

4. 調整池形状

| No | 高さ(m) | 面積(m ²) |
|----|--------|---------------------|
| 1 | 24.000 | 79.000 |
| 2 | 26.000 | 79.000 |
| 3 | 26.000 | 18,700.000 |
| 4 | 27.000 | 20,920.000 |
| 5 | 27.010 | 41,920.000 |
| 6 | 28.000 | 46,666.000 |
| 7 | 29.000 | 49,020.000 |
| 8 | 30.000 | 51,650.000 |
| 9 | 31.000 | 54,640.000 |
| 10 | 32.000 | 57,450.000 |
| 11 | 33.000 | 60,100.000 |
| 12 | 34.000 | 63,110.000 |
| 13 | 35.000 | 63,110.000 |

Ⅱ . 調整池諸元

5. 調整池容量

| No | 容量(m ³) |
|----|---------------------|
| 1 | 158.000 |
| 2 | 19,957.626 |
| 3 | 20,265.812 |
| 4 | 64,094.879 |
| 5 | 111,933.053 |
| 6 | 162,262.326 |
| 7 | 215,400.315 |
| 8 | 271,439.444 |
| 9 | 330,209.465 |
| 10 | 391,808.336 |
| 11 | 454,918.336 |

Ⅲ. 計算結果

1. 流入量の計算結果

| | |
|---------|----------------------------|
| 最大流入の時間 | 1440 分 |
| 最大流入の時刻 | 24:00 |
| 最大流入量 | 67.009 m ³ /sec |

2. 放流量の計算結果

| | |
|------------|----------------------------|
| 最大放流の時間 | 1460 分 |
| 最大放流の時刻 | 24:20 |
| 最大オリフィス放流量 | 5.886 m ³ /sec |
| 最大洪水吐き放流量 | 0.000 m ³ /sec |
| 最大放流量 | 5.886 m ³ /sec |
| 最大貯水位 | 31.935 m |
| 最大湛水面積 | 57,266.081 m ² |
| 最大貯留量 | 267,728.652 m ³ |

IV. 流入量

| 降雨時間 | 降雨時刻 | 降雨強度 (mm/hr) | 降雨量 (mm) | 流入量 (m ³ /sec) |
|------|-------|-----------------|-------------|------------------------------|
| 0 | 0:00 | 0.000 | 0.000 | 0.000 |
| 20 | 0:20 | 3.054 | 1.018 | 1.767 |
| 40 | 0:40 | 3.089 | 1.030 | 1.787 |
| 60 | 1:00 | 3.125 | 1.042 | 1.808 |
| 80 | 1:20 | 3.162 | 1.054 | 1.829 |
| 100 | 1:40 | 3.200 | 1.067 | 1.851 |
| 120 | 2:00 | 3.238 | 1.079 | 1.873 |
| 140 | 2:20 | 3.278 | 1.093 | 1.896 |
| 160 | 2:40 | 3.320 | 1.107 | 1.920 |
| 180 | 3:00 | 3.362 | 1.121 | 1.945 |
| 200 | 3:20 | 3.405 | 1.135 | 1.970 |
| 220 | 3:40 | 3.450 | 1.150 | 1.996 |
| 240 | 4:00 | 3.496 | 1.165 | 2.022 |
| 260 | 4:20 | 3.544 | 1.181 | 2.050 |
| 280 | 4:40 | 3.593 | 1.198 | 2.078 |
| 300 | 5:00 | 3.644 | 1.215 | 2.108 |
| 320 | 5:20 | 3.696 | 1.232 | 2.138 |
| 340 | 5:40 | 3.750 | 1.250 | 2.169 |
| 360 | 6:00 | 3.806 | 1.269 | 2.202 |
| 380 | 6:20 | 3.864 | 1.288 | 2.235 |
| 400 | 6:40 | 3.924 | 1.308 | 2.270 |
| 420 | 7:00 | 3.986 | 1.329 | 2.306 |
| 440 | 7:20 | 4.051 | 1.350 | 2.343 |
| 460 | 7:40 | 4.118 | 1.373 | 2.382 |
| 480 | 8:00 | 4.187 | 1.396 | 2.422 |
| 500 | 8:20 | 4.259 | 1.420 | 2.463 |
| 520 | 8:40 | 4.334 | 1.445 | 2.507 |
| 540 | 9:00 | 4.412 | 1.471 | 2.552 |
| 560 | 9:20 | 4.493 | 1.498 | 2.599 |
| 580 | 9:40 | 4.577 | 1.526 | 2.648 |
| 600 | 10:00 | 4.666 | 1.555 | 2.699 |
| 620 | 10:20 | 4.758 | 1.586 | 2.752 |
| 640 | 10:40 | 4.854 | 1.618 | 2.808 |
| 660 | 11:00 | 4.955 | 1.652 | 2.866 |
| 680 | 11:20 | 5.061 | 1.687 | 2.927 |
| 700 | 11:40 | 5.172 | 1.724 | 2.992 |
| 720 | 12:00 | 5.289 | 1.763 | 3.059 |
| 740 | 12:20 | 5.411 | 1.804 | 3.130 |
| 760 | 12:40 | 5.541 | 1.847 | 3.205 |
| 780 | 13:00 | 5.677 | 1.892 | 3.284 |
| 800 | 13:20 | 5.821 | 1.940 | 3.367 |

IV. 流入量

| 降雨時間 | 降雨時刻 | 降雨強度 (mm/hr) | 降雨量 (mm) | 流入量 (m ³ /sec) |
|------|-------|-----------------|-------------|------------------------------|
| 820 | 13:40 | 5.974 | 1.991 | 3.456 |
| 840 | 14:00 | 6.136 | 2.045 | 3.549 |
| 860 | 14:20 | 6.308 | 2.103 | 3.649 |
| 880 | 14:40 | 6.491 | 2.164 | 3.755 |
| 900 | 15:00 | 6.687 | 2.229 | 3.868 |
| 920 | 15:20 | 6.896 | 2.299 | 3.989 |
| 940 | 15:40 | 7.120 | 2.373 | 4.119 |
| 960 | 16:00 | 7.362 | 2.454 | 4.258 |
| 980 | 16:20 | 7.622 | 2.541 | 4.409 |
| 1000 | 16:40 | 7.904 | 2.635 | 4.572 |
| 1020 | 17:00 | 8.209 | 2.736 | 4.749 |
| 1040 | 17:20 | 8.542 | 2.847 | 4.941 |
| 1060 | 17:40 | 8.907 | 2.969 | 5.152 |
| 1080 | 18:00 | 9.308 | 3.103 | 5.384 |
| 1100 | 18:20 | 9.750 | 3.250 | 5.640 |
| 1120 | 18:40 | 10.242 | 3.414 | 5.924 |
| 1140 | 19:00 | 10.792 | 3.597 | 6.242 |
| 1160 | 19:20 | 11.410 | 3.803 | 6.600 |
| 1180 | 19:40 | 12.112 | 4.037 | 7.006 |
| 1200 | 20:00 | 12.915 | 4.305 | 7.471 |
| 1220 | 20:20 | 13.844 | 4.615 | 8.008 |
| 1240 | 20:40 | 14.930 | 4.977 | 8.636 |
| 1260 | 21:00 | 16.219 | 5.406 | 9.382 |
| 1280 | 21:20 | 17.775 | 5.925 | 10.282 |
| 1300 | 21:40 | 19.692 | 6.564 | 11.390 |
| 1320 | 22:00 | 22.112 | 7.371 | 12.790 |
| 1340 | 22:20 | 25.271 | 8.424 | 14.617 |
| 1360 | 22:40 | 29.574 | 9.858 | 17.106 |
| 1380 | 23:00 | 35.799 | 11.933 | 20.707 |
| 1400 | 23:20 | 45.663 | 15.221 | 26.413 |
| 1420 | 23:40 | 63.982 | 21.327 | 37.009 |
| 1440 | 24:00 | 115.845 | 38.615 | 67.009 |
| 1460 | 24:20 | 0.000 | 0.000 | 0.000 |

V. 放流特性

| 貯水位高 (m) | オリフィス放流量 (m ³ /sec) | 洪水吐き放流量 (m ³ /sec) | 放流量合計 (m ³ /sec) | 湛水面積(m ²) | 貯留量(m ³) |
|-------------|-----------------------------------|----------------------------------|--------------------------------|-----------------------|----------------------|
| 24.000 | 0.000 | 0.000 | 0.000 | 79.000 | 0.000 |
| 24.010 | 0.002 | 0.000 | 0.002 | 79.000 | 0.790 |
| 24.020 | 0.005 | 0.000 | 0.005 | 79.000 | 1.580 |
| 24.030 | 0.008 | 0.000 | 0.008 | 79.000 | 2.370 |
| 24.040 | 0.013 | 0.000 | 0.013 | 79.000 | 3.160 |
| 24.050 | 0.018 | 0.000 | 0.018 | 79.000 | 3.950 |
| 24.060 | 0.024 | 0.000 | 0.024 | 79.000 | 4.740 |
| 24.070 | 0.030 | 0.000 | 0.030 | 79.000 | 5.530 |
| 24.080 | 0.037 | 0.000 | 0.037 | 79.000 | 6.320 |
| 24.090 | 0.044 | 0.000 | 0.044 | 79.000 | 7.110 |
| 24.100 | 0.051 | 0.000 | 0.051 | 79.000 | 7.900 |
| 24.110 | 0.059 | 0.000 | 0.059 | 79.000 | 8.690 |
| 24.120 | 0.067 | 0.000 | 0.067 | 79.000 | 9.480 |
| 24.130 | 0.076 | 0.000 | 0.076 | 79.000 | 10.270 |
| 24.140 | 0.085 | 0.000 | 0.085 | 79.000 | 11.060 |
| 24.150 | 0.094 | 0.000 | 0.094 | 79.000 | 11.850 |
| 24.160 | 0.104 | 0.000 | 0.104 | 79.000 | 12.640 |
| 24.170 | 0.114 | 0.000 | 0.114 | 79.000 | 13.430 |
| 24.180 | 0.124 | 0.000 | 0.124 | 79.000 | 14.220 |
| 24.190 | 0.134 | 0.000 | 0.134 | 79.000 | 15.010 |
| 24.200 | 0.145 | 0.000 | 0.145 | 79.000 | 15.800 |
| 24.210 | 0.156 | 0.000 | 0.156 | 79.000 | 16.590 |
| 24.220 | 0.167 | 0.000 | 0.167 | 79.000 | 17.380 |
| 24.230 | 0.179 | 0.000 | 0.179 | 79.000 | 18.170 |
| 24.240 | 0.190 | 0.000 | 0.190 | 79.000 | 18.960 |
| 24.250 | 0.203 | 0.000 | 0.203 | 79.000 | 19.750 |
| 24.260 | 0.215 | 0.000 | 0.215 | 79.000 | 20.540 |
| 24.270 | 0.227 | 0.000 | 0.227 | 79.000 | 21.330 |
| 24.280 | 0.240 | 0.000 | 0.240 | 79.000 | 22.120 |
| 24.290 | 0.253 | 0.000 | 0.253 | 79.000 | 22.910 |
| 24.300 | 0.266 | 0.000 | 0.266 | 79.000 | 23.700 |
| 24.310 | 0.280 | 0.000 | 0.280 | 79.000 | 24.490 |
| 24.320 | 0.293 | 0.000 | 0.293 | 79.000 | 25.280 |
| 24.330 | 0.307 | 0.000 | 0.307 | 79.000 | 26.070 |
| 24.340 | 0.321 | 0.000 | 0.321 | 79.000 | 26.860 |
| 24.350 | 0.335 | 0.000 | 0.335 | 79.000 | 27.650 |
| 24.360 | 0.350 | 0.000 | 0.350 | 79.000 | 28.440 |
| 24.370 | 0.365 | 0.000 | 0.365 | 79.000 | 29.230 |
| 24.380 | 0.379 | 0.000 | 0.379 | 79.000 | 30.020 |
| 24.390 | 0.395 | 0.000 | 0.395 | 79.000 | 30.810 |

V. 放流特性

| 貯水位高 (m) | オリフィス放流量 (m ³ /sec) | 洪水吐き放流量 (m ³ /sec) | 放流量合計 (m ³ /sec) | 湛水面積(m ²) | 貯留量(m ³) |
|-------------|-----------------------------------|----------------------------------|--------------------------------|-----------------------|----------------------|
| 24.400 | 0.410 | 0.000 | 0.410 | 79.000 | 31.600 |
| 24.410 | 0.425 | 0.000 | 0.425 | 79.000 | 32.390 |
| 24.420 | 0.441 | 0.000 | 0.441 | 79.000 | 33.180 |
| 24.430 | 0.457 | 0.000 | 0.457 | 79.000 | 33.970 |
| 24.440 | 0.473 | 0.000 | 0.473 | 79.000 | 34.760 |
| 24.450 | 0.489 | 0.000 | 0.489 | 79.000 | 35.550 |
| 24.460 | 0.505 | 0.000 | 0.505 | 79.000 | 36.340 |
| 24.470 | 0.522 | 0.000 | 0.522 | 79.000 | 37.130 |
| 24.480 | 0.539 | 0.000 | 0.539 | 79.000 | 37.920 |
| 24.490 | 0.556 | 0.000 | 0.556 | 79.000 | 38.710 |
| 24.500 | 0.573 | 0.000 | 0.573 | 79.000 | 39.500 |
| 24.510 | 0.590 | 0.000 | 0.590 | 79.000 | 40.290 |
| 24.520 | 0.607 | 0.000 | 0.607 | 79.000 | 41.080 |
| 24.530 | 0.625 | 0.000 | 0.625 | 79.000 | 41.870 |
| 24.540 | 0.643 | 0.000 | 0.643 | 79.000 | 42.660 |
| 24.550 | 0.661 | 0.000 | 0.661 | 79.000 | 43.450 |
| 24.560 | 0.679 | 0.000 | 0.679 | 79.000 | 44.240 |
| 24.570 | 0.697 | 0.000 | 0.697 | 79.000 | 45.030 |
| 24.580 | 0.716 | 0.000 | 0.716 | 79.000 | 45.820 |
| 24.590 | 0.734 | 0.000 | 0.734 | 79.000 | 46.610 |
| 24.600 | 0.753 | 0.000 | 0.753 | 79.000 | 47.400 |
| 24.610 | 0.772 | 0.000 | 0.772 | 79.000 | 48.190 |
| 24.620 | 0.791 | 0.000 | 0.791 | 79.000 | 48.980 |
| 24.630 | 0.810 | 0.000 | 0.810 | 79.000 | 49.770 |
| 24.640 | 0.829 | 0.000 | 0.829 | 79.000 | 50.560 |
| 24.650 | 0.849 | 0.000 | 0.849 | 79.000 | 51.350 |
| 24.660 | 0.869 | 0.000 | 0.869 | 79.000 | 52.140 |
| 24.670 | 0.888 | 0.000 | 0.888 | 79.000 | 52.930 |
| 24.680 | 0.908 | 0.000 | 0.908 | 79.000 | 53.720 |
| 24.690 | 0.929 | 0.000 | 0.929 | 79.000 | 54.510 |
| 24.700 | 0.949 | 0.000 | 0.949 | 79.000 | 55.300 |
| 24.710 | 0.969 | 0.000 | 0.969 | 79.000 | 56.090 |
| 24.720 | 0.990 | 0.000 | 0.990 | 79.000 | 56.880 |
| 24.730 | 1.010 | 0.000 | 1.010 | 79.000 | 57.670 |
| 24.740 | 1.031 | 0.000 | 1.031 | 79.000 | 58.460 |
| 24.750 | 1.052 | 0.000 | 1.052 | 79.000 | 59.250 |
| 24.760 | 1.073 | 0.000 | 1.073 | 79.000 | 60.040 |
| 24.770 | 1.095 | 0.000 | 1.095 | 79.000 | 60.830 |
| 24.780 | 1.116 | 0.000 | 1.116 | 79.000 | 61.620 |
| 24.790 | 1.138 | 0.000 | 1.138 | 79.000 | 62.410 |

V. 放流特性

| 貯水位高 (m) | オリフィス放流量 (m ³ /sec) | 洪水吐き放流量 (m ³ /sec) | 放流量合計 (m ³ /sec) | 湛水面積(m ²) | 貯留量(m ³) |
|-------------|-----------------------------------|----------------------------------|--------------------------------|-----------------------|----------------------|
| 24.800 | 1.159 | 0.000 | 1.159 | 79.000 | 63.200 |
| 24.810 | 1.181 | 0.000 | 1.181 | 79.000 | 63.990 |
| 24.820 | 1.203 | 0.000 | 1.203 | 79.000 | 64.780 |
| 24.830 | 1.225 | 0.000 | 1.225 | 79.000 | 65.570 |
| 24.840 | 1.247 | 0.000 | 1.247 | 79.000 | 66.360 |
| 24.850 | 1.270 | 0.000 | 1.270 | 79.000 | 67.150 |
| 24.860 | 1.292 | 0.000 | 1.292 | 79.000 | 67.940 |
| 24.870 | 1.315 | 0.000 | 1.315 | 79.000 | 68.730 |
| 24.880 | 1.337 | 0.000 | 1.337 | 79.000 | 69.520 |
| 24.890 | 1.360 | 0.000 | 1.360 | 79.000 | 70.310 |
| 24.900 | 1.383 | 0.000 | 1.383 | 79.000 | 71.100 |
| 24.910 | 1.406 | 0.000 | 1.406 | 79.000 | 71.890 |
| 24.920 | 1.430 | 0.000 | 1.430 | 79.000 | 72.680 |
| 24.930 | 1.453 | 0.000 | 1.453 | 79.000 | 73.470 |
| 24.940 | 1.476 | 0.000 | 1.476 | 79.000 | 74.260 |
| 24.950 | 1.500 | 0.000 | 1.500 | 79.000 | 75.050 |
| 24.960 | 1.524 | 0.000 | 1.524 | 79.000 | 75.840 |
| 24.970 | 1.548 | 0.000 | 1.548 | 79.000 | 76.630 |
| 24.980 | 1.572 | 0.000 | 1.572 | 79.000 | 77.420 |
| 24.990 | 1.596 | 0.000 | 1.596 | 79.000 | 78.210 |
| 25.000 | 1.620 | 0.000 | 1.620 | 79.000 | 79.000 |
| 25.010 | 1.644 | 0.000 | 1.644 | 79.000 | 79.790 |
| 25.020 | 1.669 | 0.000 | 1.669 | 79.000 | 80.580 |
| 25.030 | 1.693 | 0.000 | 1.693 | 79.000 | 81.370 |
| 25.040 | 1.718 | 0.000 | 1.718 | 79.000 | 82.160 |
| 25.050 | 1.743 | 0.000 | 1.743 | 79.000 | 82.950 |
| 25.060 | 1.768 | 0.000 | 1.768 | 79.000 | 83.740 |
| 25.070 | 1.793 | 0.000 | 1.793 | 79.000 | 84.530 |
| 25.080 | 1.818 | 0.000 | 1.818 | 79.000 | 85.320 |
| 25.090 | 1.828 | 0.000 | 1.828 | 79.000 | 86.110 |
| 25.100 | 1.837 | 0.000 | 1.837 | 79.000 | 86.900 |
| 25.110 | 1.847 | 0.000 | 1.847 | 79.000 | 87.690 |
| 25.120 | 1.856 | 0.000 | 1.856 | 79.000 | 88.480 |
| 25.130 | 1.865 | 0.000 | 1.865 | 79.000 | 89.270 |
| 25.140 | 1.875 | 0.000 | 1.875 | 79.000 | 90.060 |
| 25.150 | 1.884 | 0.000 | 1.884 | 79.000 | 90.850 |
| 25.160 | 1.894 | 0.000 | 1.894 | 79.000 | 91.640 |
| 25.170 | 1.903 | 0.000 | 1.903 | 79.000 | 92.430 |
| 25.180 | 1.913 | 0.000 | 1.913 | 79.000 | 93.220 |
| 25.190 | 1.922 | 0.000 | 1.922 | 79.000 | 94.010 |

V. 放流特性

| 貯水位高 (m) | オリフィス放流量 (m ³ /sec) | 洪水吐き放流量 (m ³ /sec) | 放流量合計 (m ³ /sec) | 湛水面積(m ²) | 貯留量(m ³) |
|-------------|-----------------------------------|----------------------------------|--------------------------------|-----------------------|----------------------|
| 25.200 | 1.931 | 0.000 | 1.931 | 79.000 | 94.800 |
| 25.210 | 1.941 | 0.000 | 1.941 | 79.000 | 95.590 |
| 25.220 | 1.950 | 0.000 | 1.950 | 79.000 | 96.380 |
| 25.230 | 1.960 | 0.000 | 1.960 | 79.000 | 97.170 |
| 25.240 | 1.969 | 0.000 | 1.969 | 79.000 | 97.960 |
| 25.250 | 1.979 | 0.000 | 1.979 | 79.000 | 98.750 |
| 25.260 | 1.988 | 0.000 | 1.988 | 79.000 | 99.540 |
| 25.270 | 1.997 | 0.000 | 1.997 | 79.000 | 100.330 |
| 25.280 | 2.007 | 0.000 | 2.007 | 79.000 | 101.120 |
| 25.290 | 2.016 | 0.000 | 2.016 | 79.000 | 101.910 |
| 25.300 | 2.026 | 0.000 | 2.026 | 79.000 | 102.700 |
| 25.310 | 2.035 | 0.000 | 2.035 | 79.000 | 103.490 |
| 25.320 | 2.044 | 0.000 | 2.044 | 79.000 | 104.280 |
| 25.330 | 2.054 | 0.000 | 2.054 | 79.000 | 105.070 |
| 25.340 | 2.063 | 0.000 | 2.063 | 79.000 | 105.860 |
| 25.350 | 2.073 | 0.000 | 2.073 | 79.000 | 106.650 |
| 25.360 | 2.082 | 0.000 | 2.082 | 79.000 | 107.440 |
| 25.370 | 2.092 | 0.000 | 2.092 | 79.000 | 108.230 |
| 25.380 | 2.101 | 0.000 | 2.101 | 79.000 | 109.020 |
| 25.390 | 2.110 | 0.000 | 2.110 | 79.000 | 109.810 |
| 25.400 | 2.120 | 0.000 | 2.120 | 79.000 | 110.600 |
| 25.410 | 2.129 | 0.000 | 2.129 | 79.000 | 111.390 |
| 25.420 | 2.139 | 0.000 | 2.139 | 79.000 | 112.180 |
| 25.430 | 2.148 | 0.000 | 2.148 | 79.000 | 112.970 |
| 25.440 | 2.158 | 0.000 | 2.158 | 79.000 | 113.760 |
| 25.450 | 2.167 | 0.000 | 2.167 | 79.000 | 114.550 |
| 25.460 | 2.176 | 0.000 | 2.176 | 79.000 | 115.340 |
| 25.470 | 2.186 | 0.000 | 2.186 | 79.000 | 116.130 |
| 25.480 | 2.195 | 0.000 | 2.195 | 79.000 | 116.920 |
| 25.490 | 2.205 | 0.000 | 2.205 | 79.000 | 117.710 |
| 25.500 | 2.214 | 0.000 | 2.214 | 79.000 | 118.500 |
| 25.510 | 2.224 | 0.000 | 2.224 | 79.000 | 119.290 |
| 25.520 | 2.233 | 0.000 | 2.233 | 79.000 | 120.080 |
| 25.530 | 2.242 | 0.000 | 2.242 | 79.000 | 120.870 |
| 25.540 | 2.252 | 0.000 | 2.252 | 79.000 | 121.660 |
| 25.550 | 2.261 | 0.000 | 2.261 | 79.000 | 122.450 |
| 25.560 | 2.271 | 0.000 | 2.271 | 79.000 | 123.240 |
| 25.570 | 2.280 | 0.000 | 2.280 | 79.000 | 124.030 |
| 25.580 | 2.290 | 0.000 | 2.290 | 79.000 | 124.820 |
| 25.590 | 2.299 | 0.000 | 2.299 | 79.000 | 125.610 |

V. 放流特性

| 貯水位高 (m) | オリフィス放流量 (m ³ /sec) | 洪水吐き放流量 (m ³ /sec) | 放流量合計 (m ³ /sec) | 湛水面積(m ²) | 貯留量(m ³) |
|-------------|-----------------------------------|----------------------------------|--------------------------------|-----------------------|----------------------|
| 25.600 | 2.308 | 0.000 | 2.308 | 79.000 | 126.400 |
| 25.610 | 2.318 | 0.000 | 2.318 | 79.000 | 127.190 |
| 25.620 | 2.327 | 0.000 | 2.327 | 79.000 | 127.980 |
| 25.630 | 2.337 | 0.000 | 2.337 | 79.000 | 128.770 |
| 25.640 | 2.347 | 0.000 | 2.347 | 79.000 | 129.560 |
| 25.650 | 2.357 | 0.000 | 2.357 | 79.000 | 130.350 |
| 25.660 | 2.367 | 0.000 | 2.367 | 79.000 | 131.140 |
| 25.670 | 2.377 | 0.000 | 2.377 | 79.000 | 131.930 |
| 25.680 | 2.386 | 0.000 | 2.386 | 79.000 | 132.720 |
| 25.690 | 2.396 | 0.000 | 2.396 | 79.000 | 133.510 |
| 25.700 | 2.406 | 0.000 | 2.406 | 79.000 | 134.300 |
| 25.710 | 2.415 | 0.000 | 2.415 | 79.000 | 135.090 |
| 25.720 | 2.425 | 0.000 | 2.425 | 79.000 | 135.880 |
| 25.730 | 2.434 | 0.000 | 2.434 | 79.000 | 136.670 |
| 25.740 | 2.444 | 0.000 | 2.444 | 79.000 | 137.460 |
| 25.750 | 2.453 | 0.000 | 2.453 | 79.000 | 138.250 |
| 25.760 | 2.463 | 0.000 | 2.463 | 79.000 | 139.040 |
| 25.770 | 2.472 | 0.000 | 2.472 | 79.000 | 139.830 |
| 25.780 | 2.481 | 0.000 | 2.481 | 79.000 | 140.620 |
| 25.790 | 2.491 | 0.000 | 2.491 | 79.000 | 141.410 |
| 25.800 | 2.500 | 0.000 | 2.500 | 79.000 | 142.200 |
| 25.810 | 2.509 | 0.000 | 2.509 | 79.000 | 142.990 |
| 25.820 | 2.518 | 0.000 | 2.518 | 79.000 | 143.780 |
| 25.830 | 2.528 | 0.000 | 2.528 | 79.000 | 144.570 |
| 25.840 | 2.537 | 0.000 | 2.537 | 79.000 | 145.360 |
| 25.850 | 2.546 | 0.000 | 2.546 | 79.000 | 146.150 |
| 25.860 | 2.555 | 0.000 | 2.555 | 79.000 | 146.940 |
| 25.870 | 2.564 | 0.000 | 2.564 | 79.000 | 147.730 |
| 25.880 | 2.573 | 0.000 | 2.573 | 79.000 | 148.520 |
| 25.890 | 2.582 | 0.000 | 2.582 | 79.000 | 149.310 |
| 25.900 | 2.591 | 0.000 | 2.591 | 79.000 | 150.100 |
| 25.910 | 2.600 | 0.000 | 2.600 | 79.000 | 150.890 |
| 25.920 | 2.609 | 0.000 | 2.609 | 79.000 | 151.680 |
| 25.930 | 2.618 | 0.000 | 2.618 | 79.000 | 152.470 |
| 25.940 | 2.626 | 0.000 | 2.626 | 79.000 | 153.260 |
| 25.950 | 2.635 | 0.000 | 2.635 | 79.000 | 154.050 |
| 25.960 | 2.644 | 0.000 | 2.644 | 79.000 | 154.840 |
| 25.970 | 2.653 | 0.000 | 2.653 | 79.000 | 155.630 |
| 25.980 | 2.661 | 0.000 | 2.661 | 79.000 | 156.420 |
| 25.990 | 2.670 | 0.000 | 2.670 | 79.000 | 157.210 |

V. 放流特性

| 貯水位高 (m) | オリフィス放流量 (m ³ /sec) | 洪水吐き放流量 (m ³ /sec) | 放流量合計 (m ³ /sec) | 湛水面積(m ²) | 貯留量(m ³) |
|-------------|-----------------------------------|----------------------------------|--------------------------------|-----------------------|----------------------|
| 26.000 | 2.679 | 0.000 | 2.679 | 79.000 | 158.000 |
| 26.010 | 2.687 | 0.000 | 2.687 | 18,721.584 | 345.112 |
| 26.020 | 2.696 | 0.000 | 2.696 | 18,743.181 | 532.440 |
| 26.030 | 2.705 | 0.000 | 2.705 | 18,764.790 | 719.984 |
| 26.040 | 2.713 | 0.000 | 2.713 | 18,786.412 | 907.745 |
| 26.050 | 2.722 | 0.000 | 2.722 | 18,808.042 | 1,095.685 |
| 26.060 | 2.730 | 0.000 | 2.730 | 18,829.688 | 1,283.878 |
| 26.070 | 2.739 | 0.000 | 2.739 | 18,851.347 | 1,472.288 |
| 26.080 | 2.747 | 0.000 | 2.747 | 18,873.019 | 1,660.914 |
| 26.090 | 2.755 | 0.000 | 2.755 | 18,894.703 | 1,849.757 |
| 26.100 | 2.764 | 0.000 | 2.764 | 18,916.399 | 2,038.817 |
| 26.110 | 2.772 | 0.000 | 2.772 | 18,938.108 | 2,228.094 |
| 26.120 | 2.780 | 0.000 | 2.780 | 18,959.829 | 2,417.588 |
| 26.130 | 2.789 | 0.000 | 2.789 | 18,981.558 | 2,607.263 |
| 26.140 | 2.797 | 0.000 | 2.797 | 19,003.305 | 2,797.191 |
| 26.150 | 2.805 | 0.000 | 2.805 | 19,025.063 | 2,987.337 |
| 26.160 | 2.814 | 0.000 | 2.814 | 19,046.834 | 3,177.701 |
| 26.170 | 2.822 | 0.000 | 2.822 | 19,068.618 | 3,368.283 |
| 26.180 | 2.830 | 0.000 | 2.830 | 19,090.414 | 3,559.082 |
| 26.190 | 2.838 | 0.000 | 2.838 | 19,112.222 | 3,750.100 |
| 26.200 | 2.846 | 0.000 | 2.846 | 19,134.043 | 3,941.336 |
| 26.210 | 2.854 | 0.000 | 2.854 | 19,155.872 | 4,132.753 |
| 26.220 | 2.863 | 0.000 | 2.863 | 19,177.718 | 4,324.425 |
| 26.230 | 2.871 | 0.000 | 2.871 | 19,199.576 | 4,516.316 |
| 26.240 | 2.879 | 0.000 | 2.879 | 19,221.446 | 4,708.426 |
| 26.250 | 2.887 | 0.000 | 2.887 | 19,243.329 | 4,900.754 |
| 26.260 | 2.895 | 0.000 | 2.895 | 19,265.225 | 5,093.301 |
| 26.270 | 2.903 | 0.000 | 2.903 | 19,287.133 | 5,286.067 |
| 26.280 | 2.911 | 0.000 | 2.911 | 19,309.053 | 5,479.053 |
| 26.290 | 2.919 | 0.000 | 2.919 | 19,330.986 | 5,672.257 |
| 26.300 | 2.927 | 0.000 | 2.927 | 19,352.927 | 5,865.644 |
| 26.310 | 2.934 | 0.000 | 2.934 | 19,374.885 | 6,059.288 |
| 26.320 | 2.942 | 0.000 | 2.942 | 19,396.855 | 6,253.151 |
| 26.330 | 2.950 | 0.000 | 2.950 | 19,418.838 | 6,447.234 |
| 26.340 | 2.958 | 0.000 | 2.958 | 19,440.833 | 6,641.537 |
| 26.350 | 2.966 | 0.000 | 2.966 | 19,462.841 | 6,836.059 |
| 26.360 | 2.974 | 0.000 | 2.974 | 19,484.861 | 7,030.802 |
| 26.370 | 2.981 | 0.000 | 2.981 | 19,506.893 | 7,225.766 |
| 26.380 | 2.989 | 0.000 | 2.989 | 19,528.934 | 7,420.912 |
| 26.390 | 2.997 | 0.000 | 2.997 | 19,550.991 | 7,616.316 |

V. 放流特性

| 貯水位高 (m) | オリフィス放流量 (m ³ /sec) | 洪水吐き放流量 (m ³ /sec) | 放流量合計 (m ³ /sec) | 湛水面積(m ²) | 貯留量(m ³) |
|-------------|-----------------------------------|----------------------------------|--------------------------------|-----------------------|----------------------|
| 26.400 | 3.005 | 0.000 | 3.005 | 19,573.061 | 7,811.941 |
| 26.410 | 3.012 | 0.000 | 3.012 | 19,595.143 | 8,007.786 |
| 26.420 | 3.020 | 0.000 | 3.020 | 19,617.238 | 8,203.853 |
| 26.430 | 3.028 | 0.000 | 3.028 | 19,639.345 | 8,400.140 |
| 26.440 | 3.035 | 0.000 | 3.035 | 19,661.465 | 8,596.648 |
| 26.450 | 3.043 | 0.000 | 3.043 | 19,683.597 | 8,793.378 |
| 26.460 | 3.050 | 0.000 | 3.050 | 19,705.737 | 8,990.292 |
| 26.470 | 3.058 | 0.000 | 3.058 | 19,727.894 | 9,187.465 |
| 26.480 | 3.066 | 0.000 | 3.066 | 19,750.063 | 9,384.859 |
| 26.490 | 3.073 | 0.000 | 3.073 | 19,772.245 | 9,582.475 |
| 26.500 | 3.081 | 0.000 | 3.081 | 19,794.439 | 9,780.313 |
| 26.510 | 3.088 | 0.000 | 3.088 | 19,816.646 | 9,978.373 |
| 26.520 | 3.096 | 0.000 | 3.096 | 19,838.865 | 10,176.655 |
| 26.530 | 3.103 | 0.000 | 3.103 | 19,861.097 | 10,375.159 |
| 26.540 | 3.111 | 0.000 | 3.111 | 19,883.341 | 10,573.886 |
| 26.550 | 3.118 | 0.000 | 3.118 | 19,905.593 | 10,772.797 |
| 26.560 | 3.125 | 0.000 | 3.125 | 19,927.862 | 10,971.969 |
| 26.570 | 3.133 | 0.000 | 3.133 | 19,950.144 | 11,171.364 |
| 26.580 | 3.140 | 0.000 | 3.140 | 19,972.438 | 11,370.981 |
| 26.590 | 3.148 | 0.000 | 3.148 | 19,994.744 | 11,570.821 |
| 26.600 | 3.155 | 0.000 | 3.155 | 20,017.063 | 11,770.885 |
| 26.610 | 3.162 | 0.000 | 3.162 | 20,039.394 | 11,971.172 |
| 26.620 | 3.170 | 0.000 | 3.170 | 20,061.738 | 12,171.682 |
| 26.630 | 3.177 | 0.000 | 3.177 | 20,084.090 | 12,372.378 |
| 26.640 | 3.184 | 0.000 | 3.184 | 20,106.458 | 12,573.335 |
| 26.650 | 3.191 | 0.000 | 3.191 | 20,128.839 | 12,774.516 |
| 26.660 | 3.199 | 0.000 | 3.199 | 20,151.233 | 12,975.921 |
| 26.670 | 3.206 | 0.000 | 3.206 | 20,173.639 | 13,177.550 |
| 26.680 | 3.213 | 0.000 | 3.213 | 20,196.057 | 13,379.403 |
| 26.690 | 3.220 | 0.000 | 3.220 | 20,218.488 | 13,581.480 |
| 26.700 | 3.227 | 0.000 | 3.227 | 20,240.931 | 13,783.782 |
| 26.710 | 3.235 | 0.000 | 3.235 | 20,263.383 | 13,986.270 |
| 26.720 | 3.242 | 0.000 | 3.242 | 20,285.851 | 14,189.020 |
| 26.730 | 3.249 | 0.000 | 3.249 | 20,308.331 | 14,391.996 |
| 26.740 | 3.256 | 0.000 | 3.256 | 20,330.824 | 14,595.196 |
| 26.750 | 3.263 | 0.000 | 3.263 | 20,353.330 | 14,798.622 |
| 26.760 | 3.270 | 0.000 | 3.270 | 20,375.848 | 15,002.272 |
| 26.770 | 3.277 | 0.000 | 3.277 | 20,398.378 | 15,206.148 |
| 26.780 | 3.284 | 0.000 | 3.284 | 20,420.921 | 15,410.249 |
| 26.790 | 3.291 | 0.000 | 3.291 | 20,443.477 | 15,614.576 |

V. 放流特性

| 貯水位高 (m) | オリフィス放流量 (m ³ /sec) | 洪水吐き放流量 (m ³ /sec) | 放流量合計 (m ³ /sec) | 湛水面積(m ²) | 貯留量(m ³) |
|-------------|-----------------------------------|----------------------------------|--------------------------------|-----------------------|----------------------|
| 26.800 | 3.298 | 0.000 | 3.298 | 20,466.040 | 15,819.089 |
| 26.810 | 3.305 | 0.000 | 3.305 | 20,488.620 | 16,023.867 |
| 26.820 | 3.312 | 0.000 | 3.312 | 20,511.213 | 16,228.871 |
| 26.830 | 3.319 | 0.000 | 3.319 | 20,533.818 | 16,434.101 |
| 26.840 | 3.326 | 0.000 | 3.326 | 20,556.436 | 16,639.557 |
| 26.850 | 3.333 | 0.000 | 3.333 | 20,579.066 | 16,845.239 |
| 26.860 | 3.340 | 0.000 | 3.340 | 20,601.708 | 17,051.147 |
| 26.870 | 3.347 | 0.000 | 3.347 | 20,624.363 | 17,257.283 |
| 26.880 | 3.354 | 0.000 | 3.354 | 20,647.026 | 17,463.605 |
| 26.890 | 3.361 | 0.000 | 3.361 | 20,669.706 | 17,670.193 |
| 26.900 | 3.368 | 0.000 | 3.368 | 20,692.398 | 17,877.008 |
| 26.910 | 3.375 | 0.000 | 3.375 | 20,715.103 | 18,084.051 |
| 26.920 | 3.382 | 0.000 | 3.382 | 20,737.820 | 18,291.320 |
| 26.930 | 3.388 | 0.000 | 3.388 | 20,760.550 | 18,498.817 |
| 26.940 | 3.395 | 0.000 | 3.395 | 20,783.292 | 18,706.541 |
| 26.950 | 3.402 | 0.000 | 3.402 | 20,806.046 | 18,914.492 |
| 26.960 | 3.409 | 0.000 | 3.409 | 20,828.809 | 19,122.631 |
| 26.970 | 3.416 | 0.000 | 3.416 | 20,851.588 | 19,331.038 |
| 26.980 | 3.422 | 0.000 | 3.422 | 20,874.380 | 19,539.673 |
| 26.990 | 3.429 | 0.000 | 3.429 | 20,897.184 | 19,748.535 |
| 27.000 | 3.436 | 0.000 | 3.436 | 20,920.001 | 19,957.626 |
| 27.010 | 3.443 | 0.000 | 3.443 | 41,920.001 | 20,265.812 |
| 27.020 | 3.449 | 0.000 | 3.449 | 41,966.668 | 20,685.255 |
| 27.030 | 3.456 | 0.000 | 3.456 | 42,013.363 | 21,105.164 |
| 27.040 | 3.463 | 0.000 | 3.463 | 42,060.083 | 21,525.541 |
| 27.050 | 3.469 | 0.000 | 3.469 | 42,106.820 | 21,946.305 |
| 27.060 | 3.476 | 0.000 | 3.476 | 42,153.593 | 22,367.617 |
| 27.070 | 3.483 | 0.000 | 3.483 | 42,200.391 | 22,789.396 |
| 27.080 | 3.489 | 0.000 | 3.489 | 42,247.215 | 23,211.644 |
| 27.090 | 3.496 | 0.000 | 3.496 | 42,294.065 | 23,634.360 |
| 27.100 | 3.503 | 0.000 | 3.503 | 42,340.941 | 24,057.545 |
| 27.110 | 3.509 | 0.000 | 3.509 | 42,387.843 | 24,481.198 |
| 27.120 | 3.516 | 0.000 | 3.516 | 42,434.771 | 24,905.321 |
| 27.130 | 3.522 | 0.000 | 3.522 | 42,481.716 | 25,329.832 |
| 27.140 | 3.529 | 0.000 | 3.529 | 42,528.696 | 25,754.894 |
| 27.150 | 3.535 | 0.000 | 3.535 | 42,575.702 | 26,180.426 |
| 27.160 | 3.542 | 0.000 | 3.542 | 42,622.734 | 26,606.427 |
| 27.170 | 3.549 | 0.000 | 3.549 | 42,669.791 | 27,032.900 |
| 27.180 | 3.555 | 0.000 | 3.555 | 42,716.875 | 27,459.843 |
| 27.190 | 3.562 | 0.000 | 3.562 | 42,763.985 | 27,887.257 |

V. 放流特性

| 貯水位高 (m) | オリフィス放流量 (m ³ /sec) | 洪水吐き放流量 (m ³ /sec) | 放流量合計 (m ³ /sec) | 湛水面積(m ²) | 貯留量(m ³) |
|-------------|-----------------------------------|----------------------------------|--------------------------------|-----------------------|----------------------|
| 27.200 | 3.568 | 0.000 | 3.568 | 42,811.121 | 28,315.142 |
| 27.210 | 3.575 | 0.000 | 3.575 | 42,858.273 | 28,743.417 |
| 27.220 | 3.581 | 0.000 | 3.581 | 42,905.461 | 29,172.246 |
| 27.230 | 3.587 | 0.000 | 3.587 | 42,952.674 | 29,601.546 |
| 27.240 | 3.594 | 0.000 | 3.594 | 42,999.914 | 30,031.319 |
| 27.250 | 3.600 | 0.000 | 3.600 | 43,047.179 | 30,461.564 |
| 27.260 | 3.607 | 0.000 | 3.607 | 43,094.471 | 30,892.282 |
| 27.270 | 3.613 | 0.000 | 3.613 | 43,141.788 | 31,323.474 |
| 27.280 | 3.620 | 0.000 | 3.620 | 43,189.132 | 31,755.138 |
| 27.290 | 3.626 | 0.000 | 3.626 | 43,236.501 | 32,187.276 |
| 27.300 | 3.632 | 0.000 | 3.632 | 43,283.887 | 32,619.805 |
| 27.310 | 3.639 | 0.000 | 3.639 | 43,331.308 | 33,052.891 |
| 27.320 | 3.645 | 0.000 | 3.645 | 43,378.756 | 33,486.451 |
| 27.330 | 3.651 | 0.000 | 3.651 | 43,426.229 | 33,920.486 |
| 27.340 | 3.658 | 0.000 | 3.658 | 43,473.728 | 34,354.996 |
| 27.350 | 3.664 | 0.000 | 3.664 | 43,521.253 | 34,789.981 |
| 27.360 | 3.670 | 0.000 | 3.670 | 43,568.804 | 35,225.441 |
| 27.370 | 3.677 | 0.000 | 3.677 | 43,616.381 | 35,661.377 |
| 27.380 | 3.683 | 0.000 | 3.683 | 43,663.975 | 36,097.705 |
| 27.390 | 3.689 | 0.000 | 3.689 | 43,711.604 | 36,534.593 |
| 27.400 | 3.696 | 0.000 | 3.696 | 43,759.259 | 36,971.958 |
| 27.410 | 3.702 | 0.000 | 3.702 | 43,806.940 | 37,409.799 |
| 27.420 | 3.708 | 0.000 | 3.708 | 43,854.647 | 37,848.117 |
| 27.430 | 3.714 | 0.000 | 3.714 | 43,902.379 | 38,286.912 |
| 27.440 | 3.720 | 0.000 | 3.720 | 43,950.138 | 38,726.184 |
| 27.450 | 3.727 | 0.000 | 3.727 | 43,997.923 | 39,165.935 |
| 27.460 | 3.733 | 0.000 | 3.733 | 44,045.725 | 39,606.079 |
| 27.470 | 3.739 | 0.000 | 3.739 | 44,093.561 | 40,046.785 |
| 27.480 | 3.745 | 0.000 | 3.745 | 44,141.424 | 40,487.970 |
| 27.490 | 3.751 | 0.000 | 3.751 | 44,189.312 | 40,929.634 |
| 27.500 | 3.758 | 0.000 | 3.758 | 44,237.227 | 41,371.777 |
| 27.510 | 3.764 | 0.000 | 3.764 | 44,285.167 | 41,814.399 |
| 27.520 | 3.770 | 0.000 | 3.770 | 44,333.134 | 42,257.501 |
| 27.530 | 3.776 | 0.000 | 3.776 | 44,381.126 | 42,701.082 |
| 27.540 | 3.782 | 0.000 | 3.782 | 44,429.145 | 43,145.144 |
| 27.550 | 3.788 | 0.000 | 3.788 | 44,477.180 | 43,589.601 |
| 27.560 | 3.794 | 0.000 | 3.794 | 44,525.250 | 44,034.623 |
| 27.570 | 3.801 | 0.000 | 3.801 | 44,573.347 | 44,480.126 |
| 27.580 | 3.807 | 0.000 | 3.807 | 44,621.469 | 44,926.110 |
| 27.590 | 3.813 | 0.000 | 3.813 | 44,669.617 | 45,372.576 |

V. 放流特性

| 貯水位高 (m) | オリフィス放流量 (m ³ /sec) | 洪水吐き放流量 (m ³ /sec) | 放流量合計 (m ³ /sec) | 湛水面積(m ²) | 貯留量(m ³) |
|-------------|-----------------------------------|----------------------------------|--------------------------------|-----------------------|----------------------|
| 27.600 | 3.819 | 0.000 | 3.819 | 44,717.791 | 45,819.523 |
| 27.610 | 3.825 | 0.000 | 3.825 | 44,765.991 | 46,266.952 |
| 27.620 | 3.831 | 0.000 | 3.831 | 44,814.217 | 46,714.864 |
| 27.630 | 3.837 | 0.000 | 3.837 | 44,862.460 | 47,163.172 |
| 27.640 | 3.843 | 0.000 | 3.843 | 44,910.738 | 47,612.048 |
| 27.650 | 3.849 | 0.000 | 3.849 | 44,959.042 | 48,061.407 |
| 27.660 | 3.855 | 0.000 | 3.855 | 45,007.372 | 48,511.249 |
| 27.670 | 3.861 | 0.000 | 3.861 | 45,055.728 | 48,961.575 |
| 27.680 | 3.867 | 0.000 | 3.867 | 45,104.110 | 49,412.385 |
| 27.690 | 3.873 | 0.000 | 3.873 | 45,152.518 | 49,863.678 |
| 27.700 | 3.879 | 0.000 | 3.879 | 45,200.951 | 50,315.456 |
| 27.710 | 3.885 | 0.000 | 3.885 | 45,249.402 | 50,767.632 |
| 27.720 | 3.891 | 0.000 | 3.891 | 45,297.888 | 51,220.378 |
| 27.730 | 3.897 | 0.000 | 3.897 | 45,346.399 | 51,673.610 |
| 27.740 | 3.903 | 0.000 | 3.903 | 45,394.937 | 52,127.327 |
| 27.750 | 3.909 | 0.000 | 3.909 | 45,443.501 | 52,581.530 |
| 27.760 | 3.915 | 0.000 | 3.915 | 45,492.090 | 53,036.218 |
| 27.770 | 3.920 | 0.000 | 3.920 | 45,540.706 | 53,491.393 |
| 27.780 | 3.926 | 0.000 | 3.926 | 45,589.347 | 53,947.053 |
| 27.790 | 3.932 | 0.000 | 3.932 | 45,638.015 | 54,403.200 |
| 27.800 | 3.938 | 0.000 | 3.938 | 45,686.699 | 54,859.747 |
| 27.810 | 3.944 | 0.000 | 3.944 | 45,735.418 | 55,316.868 |
| 27.820 | 3.950 | 0.000 | 3.950 | 45,784.163 | 55,774.477 |
| 27.830 | 3.956 | 0.000 | 3.956 | 45,832.935 | 56,232.573 |
| 27.840 | 3.962 | 0.000 | 3.962 | 45,881.732 | 56,691.157 |
| 27.850 | 3.967 | 0.000 | 3.967 | 45,930.555 | 57,150.228 |
| 27.860 | 3.973 | 0.000 | 3.973 | 45,979.404 | 57,609.789 |
| 27.870 | 3.979 | 0.000 | 3.979 | 46,028.280 | 58,069.838 |
| 27.880 | 3.985 | 0.000 | 3.985 | 46,077.171 | 58,530.288 |
| 27.890 | 3.991 | 0.000 | 3.991 | 46,126.098 | 58,991.314 |
| 27.900 | 3.996 | 0.000 | 3.996 | 46,175.051 | 59,452.831 |
| 27.910 | 4.002 | 0.000 | 4.002 | 46,224.030 | 59,914.837 |
| 27.920 | 4.008 | 0.000 | 4.008 | 46,273.035 | 60,377.333 |
| 27.930 | 4.014 | 0.000 | 4.014 | 46,322.066 | 60,840.319 |
| 27.940 | 4.020 | 0.000 | 4.020 | 46,371.123 | 61,303.795 |
| 27.950 | 4.025 | 0.000 | 4.025 | 46,420.206 | 61,767.762 |
| 27.960 | 4.031 | 0.000 | 4.031 | 46,469.305 | 62,232.132 |
| 27.970 | 4.037 | 0.000 | 4.037 | 46,518.440 | 62,697.081 |
| 27.980 | 4.043 | 0.000 | 4.043 | 46,567.601 | 63,162.522 |
| 27.990 | 4.048 | 0.000 | 4.048 | 46,616.788 | 63,628.455 |

V. 放流特性

| 貯水位高 (m) | オリフィス放流量 (m ³ /sec) | 洪水吐き放流量 (m ³ /sec) | 放流量合計 (m ³ /sec) | 湛水面積(m ²) | 貯留量(m ³) |
|-------------|-----------------------------------|----------------------------------|--------------------------------|-----------------------|----------------------|
| 28.000 | 4.054 | 0.000 | 4.054 | 46,666.000 | 64,094.879 |
| 28.010 | 4.060 | 0.000 | 4.060 | 46,689.254 | 64,561.666 |
| 28.020 | 4.065 | 0.000 | 4.065 | 46,712.513 | 65,028.686 |
| 28.030 | 4.071 | 0.000 | 4.071 | 46,735.779 | 65,495.938 |
| 28.040 | 4.077 | 0.000 | 4.077 | 46,759.050 | 65,963.423 |
| 28.050 | 4.082 | 0.000 | 4.082 | 46,782.323 | 66,431.051 |
| 28.060 | 4.088 | 0.000 | 4.088 | 46,805.605 | 66,899.002 |
| 28.070 | 4.094 | 0.000 | 4.094 | 46,828.894 | 67,367.185 |
| 28.080 | 4.099 | 0.000 | 4.099 | 46,852.188 | 67,835.601 |
| 28.090 | 4.105 | 0.000 | 4.105 | 46,875.488 | 68,304.250 |
| 28.100 | 4.111 | 0.000 | 4.111 | 46,898.794 | 68,773.132 |
| 28.110 | 4.116 | 0.000 | 4.116 | 46,922.106 | 69,242.247 |
| 28.120 | 4.122 | 0.000 | 4.122 | 46,945.424 | 69,711.596 |
| 28.130 | 4.128 | 0.000 | 4.128 | 46,968.742 | 70,181.088 |
| 28.140 | 4.133 | 0.000 | 4.133 | 46,992.072 | 70,650.903 |
| 28.150 | 4.139 | 0.000 | 4.139 | 47,015.406 | 71,120.951 |
| 28.160 | 4.144 | 0.000 | 4.144 | 47,038.747 | 71,591.232 |
| 28.170 | 4.150 | 0.000 | 4.150 | 47,062.094 | 72,061.747 |
| 28.180 | 4.155 | 0.000 | 4.155 | 47,085.446 | 72,532.496 |
| 28.190 | 4.161 | 0.000 | 4.161 | 47,108.804 | 73,003.478 |
| 28.200 | 4.167 | 0.000 | 4.167 | 47,132.168 | 73,474.694 |
| 28.210 | 4.172 | 0.000 | 4.172 | 47,155.533 | 73,946.053 |
| 28.220 | 4.178 | 0.000 | 4.178 | 47,178.908 | 74,417.736 |
| 28.230 | 4.183 | 0.000 | 4.183 | 47,202.290 | 74,889.653 |
| 28.240 | 4.189 | 0.000 | 4.189 | 47,225.677 | 75,361.803 |
| 28.250 | 4.194 | 0.000 | 4.194 | 47,249.070 | 75,834.188 |
| 28.260 | 4.200 | 0.000 | 4.200 | 47,272.468 | 76,306.806 |
| 28.270 | 4.205 | 0.000 | 4.205 | 47,295.873 | 76,779.659 |
| 28.280 | 4.211 | 0.000 | 4.211 | 47,319.283 | 77,252.746 |
| 28.290 | 4.216 | 0.000 | 4.216 | 47,342.699 | 77,726.066 |
| 28.300 | 4.222 | 0.000 | 4.222 | 47,366.116 | 78,199.531 |
| 28.310 | 4.227 | 0.000 | 4.227 | 47,389.544 | 78,673.320 |
| 28.320 | 4.233 | 0.000 | 4.233 | 47,412.977 | 79,147.344 |
| 28.330 | 4.238 | 0.000 | 4.238 | 47,436.416 | 79,621.601 |
| 28.340 | 4.244 | 0.000 | 4.244 | 47,459.861 | 80,096.094 |
| 28.350 | 4.249 | 0.000 | 4.249 | 47,483.312 | 80,570.820 |
| 28.360 | 4.255 | 0.000 | 4.255 | 47,506.768 | 81,045.782 |
| 28.370 | 4.260 | 0.000 | 4.260 | 47,530.231 | 81,520.977 |
| 28.380 | 4.265 | 0.000 | 4.265 | 47,553.694 | 81,996.317 |
| 28.390 | 4.271 | 0.000 | 4.271 | 47,577.168 | 82,471.983 |

V. 放流特性

| 貯水位高 (m) | オリフィス放流量 (m ³ /sec) | 洪水吐き放流量 (m ³ /sec) | 放流量合計 (m ³ /sec) | 湛水面積(m ²) | 貯留量(m ³) |
|-------------|-----------------------------------|----------------------------------|--------------------------------|-----------------------|----------------------|
| 28.400 | 4.276 | 0.000 | 4.276 | 47,600.648 | 82,947.882 |
| 28.410 | 4.282 | 0.000 | 4.282 | 47,624.133 | 83,424.017 |
| 28.420 | 4.287 | 0.000 | 4.287 | 47,647.625 | 83,900.387 |
| 28.430 | 4.292 | 0.000 | 4.292 | 47,671.122 | 84,376.992 |
| 28.440 | 4.298 | 0.000 | 4.298 | 47,694.625 | 84,853.831 |
| 28.450 | 4.303 | 0.000 | 4.303 | 47,718.133 | 85,330.906 |
| 28.460 | 4.309 | 0.000 | 4.309 | 47,741.643 | 85,808.125 |
| 28.470 | 4.314 | 0.000 | 4.314 | 47,765.163 | 86,285.670 |
| 28.480 | 4.319 | 0.000 | 4.319 | 47,788.689 | 86,763.450 |
| 28.490 | 4.325 | 0.000 | 4.325 | 47,812.221 | 87,241.465 |
| 28.500 | 4.330 | 0.000 | 4.330 | 47,835.759 | 87,719.716 |
| 28.510 | 4.335 | 0.000 | 4.335 | 47,859.302 | 88,198.203 |
| 28.520 | 4.341 | 0.000 | 4.341 | 47,882.852 | 88,676.924 |
| 28.530 | 4.346 | 0.000 | 4.346 | 47,906.407 | 89,155.882 |
| 28.540 | 4.351 | 0.000 | 4.351 | 47,929.967 | 89,635.074 |
| 28.550 | 4.357 | 0.000 | 4.357 | 47,953.529 | 90,114.411 |
| 28.560 | 4.362 | 0.000 | 4.362 | 47,977.102 | 90,594.076 |
| 28.570 | 4.367 | 0.000 | 4.367 | 48,000.680 | 91,073.975 |
| 28.580 | 4.373 | 0.000 | 4.373 | 48,024.264 | 91,554.111 |
| 28.590 | 4.378 | 0.000 | 4.378 | 48,047.854 | 92,034.483 |
| 28.600 | 4.383 | 0.000 | 4.383 | 48,071.449 | 92,515.090 |
| 28.610 | 4.388 | 0.000 | 4.388 | 48,095.051 | 92,995.934 |
| 28.620 | 4.394 | 0.000 | 4.394 | 48,118.658 | 93,477.013 |
| 28.630 | 4.399 | 0.000 | 4.399 | 48,142.266 | 93,958.237 |
| 28.640 | 4.404 | 0.000 | 4.404 | 48,165.885 | 94,439.789 |
| 28.650 | 4.409 | 0.000 | 4.409 | 48,189.509 | 94,921.577 |
| 28.660 | 4.415 | 0.000 | 4.415 | 48,213.140 | 95,403.601 |
| 28.670 | 4.420 | 0.000 | 4.420 | 48,236.776 | 95,885.862 |
| 28.680 | 4.425 | 0.000 | 4.425 | 48,260.418 | 96,368.359 |
| 28.690 | 4.430 | 0.000 | 4.430 | 48,284.065 | 96,851.092 |
| 28.700 | 4.436 | 0.000 | 4.436 | 48,307.719 | 97,334.062 |
| 28.710 | 4.441 | 0.000 | 4.441 | 48,331.373 | 97,817.177 |
| 28.720 | 4.446 | 0.000 | 4.446 | 48,355.038 | 98,300.620 |
| 28.730 | 4.451 | 0.000 | 4.451 | 48,378.709 | 98,784.300 |
| 28.740 | 4.456 | 0.000 | 4.456 | 48,402.386 | 99,268.216 |
| 28.750 | 4.462 | 0.000 | 4.462 | 48,426.068 | 99,752.370 |
| 28.760 | 4.467 | 0.000 | 4.467 | 48,449.757 | 100,236.760 |
| 28.770 | 4.472 | 0.000 | 4.472 | 48,473.451 | 100,721.387 |
| 28.780 | 4.477 | 0.000 | 4.477 | 48,497.150 | 101,206.251 |
| 28.790 | 4.482 | 0.000 | 4.482 | 48,520.856 | 101,691.352 |

V. 放流特性

| 貯水位高 (m) | オリフィス放流量 (m ³ /sec) | 洪水吐き放流量 (m ³ /sec) | 放流量合計 (m ³ /sec) | 湛水面積(m ²) | 貯留量(m ³) |
|-------------|-----------------------------------|----------------------------------|--------------------------------|-----------------------|----------------------|
| 28.800 | 4.488 | 0.000 | 4.488 | 48,544.563 | 102,176.598 |
| 28.810 | 4.493 | 0.000 | 4.493 | 48,568.280 | 102,662.173 |
| 28.820 | 4.498 | 0.000 | 4.498 | 48,592.003 | 103,147.986 |
| 28.830 | 4.503 | 0.000 | 4.503 | 48,615.732 | 103,634.036 |
| 28.840 | 4.508 | 0.000 | 4.508 | 48,639.466 | 104,120.323 |
| 28.850 | 4.513 | 0.000 | 4.513 | 48,663.207 | 104,606.847 |
| 28.860 | 4.518 | 0.000 | 4.518 | 48,686.953 | 105,093.609 |
| 28.870 | 4.524 | 0.000 | 4.524 | 48,710.705 | 105,580.609 |
| 28.880 | 4.529 | 0.000 | 4.529 | 48,734.458 | 106,067.753 |
| 28.890 | 4.534 | 0.000 | 4.534 | 48,758.221 | 106,555.227 |
| 28.900 | 4.539 | 0.000 | 4.539 | 48,781.991 | 107,042.939 |
| 28.910 | 4.544 | 0.000 | 4.544 | 48,805.766 | 107,530.889 |
| 28.920 | 4.549 | 0.000 | 4.549 | 48,829.547 | 108,019.077 |
| 28.930 | 4.554 | 0.000 | 4.554 | 48,853.333 | 108,507.503 |
| 28.940 | 4.559 | 0.000 | 4.559 | 48,877.126 | 108,996.166 |
| 28.950 | 4.564 | 0.000 | 4.564 | 48,900.924 | 109,485.068 |
| 28.960 | 4.569 | 0.000 | 4.569 | 48,924.724 | 109,974.114 |
| 28.970 | 4.574 | 0.000 | 4.574 | 48,948.534 | 110,463.491 |
| 28.980 | 4.579 | 0.000 | 4.579 | 48,972.349 | 110,953.107 |
| 28.990 | 4.585 | 0.000 | 4.585 | 48,996.171 | 111,442.961 |
| 29.000 | 4.590 | 0.000 | 4.590 | 49,019.998 | 111,933.053 |
| 29.010 | 4.595 | 0.000 | 4.595 | 49,045.960 | 112,423.394 |
| 29.020 | 4.600 | 0.000 | 4.600 | 49,071.928 | 112,913.994 |
| 29.030 | 4.605 | 0.000 | 4.605 | 49,097.902 | 113,404.855 |
| 29.040 | 4.610 | 0.000 | 4.610 | 49,123.883 | 113,895.975 |
| 29.050 | 4.615 | 0.000 | 4.615 | 49,149.866 | 114,387.261 |
| 29.060 | 4.620 | 0.000 | 4.620 | 49,175.860 | 114,878.901 |
| 29.070 | 4.625 | 0.000 | 4.625 | 49,201.862 | 115,370.801 |
| 29.080 | 4.630 | 0.000 | 4.630 | 49,227.871 | 115,862.961 |
| 29.090 | 4.635 | 0.000 | 4.635 | 49,253.886 | 116,355.381 |
| 29.100 | 4.640 | 0.000 | 4.640 | 49,279.908 | 116,848.061 |
| 29.110 | 4.645 | 0.000 | 4.645 | 49,305.937 | 117,341.002 |
| 29.120 | 4.650 | 0.000 | 4.650 | 49,331.973 | 117,834.203 |
| 29.130 | 4.655 | 0.000 | 4.655 | 49,358.011 | 118,327.570 |
| 29.140 | 4.660 | 0.000 | 4.660 | 49,384.061 | 118,821.291 |
| 29.150 | 4.665 | 0.000 | 4.665 | 49,410.118 | 119,315.274 |
| 29.160 | 4.670 | 0.000 | 4.670 | 49,436.181 | 119,809.516 |
| 29.170 | 4.675 | 0.000 | 4.675 | 49,462.251 | 120,304.020 |
| 29.180 | 4.679 | 0.000 | 4.679 | 49,488.329 | 120,798.784 |
| 29.190 | 4.684 | 0.000 | 4.684 | 49,514.413 | 121,293.809 |

V. 放流特性

| 貯水位高 (m) | オリフィス放流量 (m ³ /sec) | 洪水吐き放流量 (m ³ /sec) | 放流量合計 (m ³ /sec) | 湛水面積(m ²) | 貯留量(m ³) |
|-------------|-----------------------------------|----------------------------------|--------------------------------|-----------------------|----------------------|
| 29.200 | 4.689 | 0.000 | 4.689 | 49,540.504 | 121,789.095 |
| 29.210 | 4.694 | 0.000 | 4.694 | 49,566.597 | 122,284.548 |
| 29.220 | 4.699 | 0.000 | 4.699 | 49,592.701 | 122,780.355 |
| 29.230 | 4.704 | 0.000 | 4.704 | 49,618.813 | 123,276.424 |
| 29.240 | 4.709 | 0.000 | 4.709 | 49,644.931 | 123,772.754 |
| 29.250 | 4.714 | 0.000 | 4.714 | 49,671.057 | 124,269.346 |
| 29.260 | 4.719 | 0.000 | 4.719 | 49,697.189 | 124,766.198 |
| 29.270 | 4.724 | 0.000 | 4.724 | 49,723.328 | 125,263.312 |
| 29.280 | 4.729 | 0.000 | 4.729 | 49,749.474 | 125,760.688 |
| 29.290 | 4.734 | 0.000 | 4.734 | 49,775.627 | 126,258.325 |
| 29.300 | 4.738 | 0.000 | 4.738 | 49,801.781 | 126,756.128 |
| 29.310 | 4.743 | 0.000 | 4.743 | 49,827.948 | 127,254.288 |
| 29.320 | 4.748 | 0.000 | 4.748 | 49,854.121 | 127,752.710 |
| 29.330 | 4.753 | 0.000 | 4.753 | 49,880.302 | 128,251.393 |
| 29.340 | 4.758 | 0.000 | 4.758 | 49,906.489 | 128,750.339 |
| 29.350 | 4.763 | 0.000 | 4.763 | 49,932.683 | 129,249.546 |
| 29.360 | 4.768 | 0.000 | 4.768 | 49,958.884 | 129,749.015 |
| 29.370 | 4.773 | 0.000 | 4.773 | 49,985.092 | 130,248.747 |
| 29.380 | 4.777 | 0.000 | 4.777 | 50,011.301 | 130,748.645 |
| 29.390 | 4.782 | 0.000 | 4.782 | 50,037.523 | 131,248.900 |
| 29.400 | 4.787 | 0.000 | 4.787 | 50,063.751 | 131,749.418 |
| 29.410 | 4.792 | 0.000 | 4.792 | 50,089.987 | 132,250.198 |
| 29.420 | 4.797 | 0.000 | 4.797 | 50,116.229 | 132,751.241 |
| 29.430 | 4.802 | 0.000 | 4.802 | 50,142.478 | 133,252.546 |
| 29.440 | 4.806 | 0.000 | 4.806 | 50,168.734 | 133,754.113 |
| 29.450 | 4.811 | 0.000 | 4.811 | 50,194.997 | 134,255.944 |
| 29.460 | 4.816 | 0.000 | 4.816 | 50,221.261 | 134,757.941 |
| 29.470 | 4.821 | 0.000 | 4.821 | 50,247.538 | 135,260.296 |
| 29.480 | 4.826 | 0.000 | 4.826 | 50,273.821 | 135,762.914 |
| 29.490 | 4.830 | 0.000 | 4.830 | 50,300.111 | 136,265.796 |
| 29.500 | 4.835 | 0.000 | 4.835 | 50,326.409 | 136,768.940 |
| 29.510 | 4.840 | 0.000 | 4.840 | 50,352.713 | 137,272.347 |
| 29.520 | 4.845 | 0.000 | 4.845 | 50,379.023 | 137,776.017 |
| 29.530 | 4.849 | 0.000 | 4.849 | 50,405.341 | 138,279.950 |
| 29.540 | 4.854 | 0.000 | 4.854 | 50,431.666 | 138,784.147 |
| 29.550 | 4.859 | 0.000 | 4.859 | 50,457.992 | 139,288.511 |
| 29.560 | 4.864 | 0.000 | 4.864 | 50,484.331 | 139,793.234 |
| 29.570 | 4.869 | 0.000 | 4.869 | 50,510.676 | 140,298.220 |
| 29.580 | 4.873 | 0.000 | 4.873 | 50,537.028 | 140,803.471 |
| 29.590 | 4.878 | 0.000 | 4.878 | 50,563.387 | 141,308.984 |

V. 放流特性

| 貯水位高 (m) | オリフィス放流量 (m ³ /sec) | 洪水吐き放流量 (m ³ /sec) | 放流量合計 (m ³ /sec) | 湛水面積(m ²) | 貯留量(m ³) |
|-------------|-----------------------------------|----------------------------------|--------------------------------|-----------------------|----------------------|
| 29.600 | 4.883 | 0.000 | 4.883 | 50,589.753 | 141,814.761 |
| 29.610 | 4.888 | 0.000 | 4.888 | 50,616.126 | 142,320.802 |
| 29.620 | 4.892 | 0.000 | 4.892 | 50,642.505 | 142,827.107 |
| 29.630 | 4.897 | 0.000 | 4.897 | 50,668.887 | 143,333.579 |
| 29.640 | 4.902 | 0.000 | 4.902 | 50,695.280 | 143,840.412 |
| 29.650 | 4.906 | 0.000 | 4.906 | 50,721.680 | 144,347.508 |
| 29.660 | 4.911 | 0.000 | 4.911 | 50,748.087 | 144,854.868 |
| 29.670 | 4.916 | 0.000 | 4.916 | 50,774.501 | 145,362.493 |
| 29.680 | 4.921 | 0.000 | 4.921 | 50,800.922 | 145,870.382 |
| 29.690 | 4.925 | 0.000 | 4.925 | 50,827.350 | 146,378.535 |
| 29.700 | 4.930 | 0.000 | 4.930 | 50,853.784 | 146,886.952 |
| 29.710 | 4.935 | 0.000 | 4.935 | 50,880.221 | 147,395.537 |
| 29.720 | 4.939 | 0.000 | 4.939 | 50,906.669 | 147,904.483 |
| 29.730 | 4.944 | 0.000 | 4.944 | 50,933.124 | 148,413.693 |
| 29.740 | 4.949 | 0.000 | 4.949 | 50,959.586 | 148,923.169 |
| 29.750 | 4.953 | 0.000 | 4.953 | 50,986.055 | 149,432.909 |
| 29.760 | 4.958 | 0.000 | 4.958 | 51,012.531 | 149,942.913 |
| 29.770 | 4.963 | 0.000 | 4.963 | 51,039.014 | 150,453.183 |
| 29.780 | 4.967 | 0.000 | 4.967 | 51,065.503 | 150,963.717 |
| 29.790 | 4.972 | 0.000 | 4.972 | 51,092.000 | 151,474.516 |
| 29.800 | 4.977 | 0.000 | 4.977 | 51,118.498 | 151,985.483 |
| 29.810 | 4.981 | 0.000 | 4.981 | 51,145.008 | 152,496.812 |
| 29.820 | 4.986 | 0.000 | 4.986 | 51,171.525 | 153,008.406 |
| 29.830 | 4.991 | 0.000 | 4.991 | 51,198.049 | 153,520.266 |
| 29.840 | 4.995 | 0.000 | 4.995 | 51,224.580 | 154,032.391 |
| 29.850 | 5.000 | 0.000 | 5.000 | 51,251.118 | 154,544.781 |
| 29.860 | 5.005 | 0.000 | 5.005 | 51,277.662 | 155,057.437 |
| 29.870 | 5.009 | 0.000 | 5.009 | 51,304.214 | 155,570.358 |
| 29.880 | 5.014 | 0.000 | 5.014 | 51,330.767 | 156,083.447 |
| 29.890 | 5.018 | 0.000 | 5.018 | 51,357.332 | 156,596.899 |
| 29.900 | 5.023 | 0.000 | 5.023 | 51,383.904 | 157,110.617 |
| 29.910 | 5.028 | 0.000 | 5.028 | 51,410.483 | 157,624.601 |
| 29.920 | 5.032 | 0.000 | 5.032 | 51,437.069 | 158,138.850 |
| 29.930 | 5.037 | 0.000 | 5.037 | 51,463.661 | 158,653.366 |
| 29.940 | 5.041 | 0.000 | 5.041 | 51,490.261 | 159,168.147 |
| 29.950 | 5.046 | 0.000 | 5.046 | 51,516.867 | 159,683.194 |
| 29.960 | 5.051 | 0.000 | 5.051 | 51,543.475 | 160,198.410 |
| 29.970 | 5.055 | 0.000 | 5.055 | 51,570.096 | 160,713.989 |
| 29.980 | 5.060 | 0.000 | 5.060 | 51,596.723 | 161,229.835 |
| 29.990 | 5.064 | 0.000 | 5.064 | 51,623.356 | 161,745.947 |

V. 放流特性

| 貯水位高 (m) | オリフィス放流量 (m ³ /sec) | 洪水吐き放流量 (m ³ /sec) | 放流量合計 (m ³ /sec) | 湛水面積(m ²) | 貯留量(m ³) |
|-------------|-----------------------------------|----------------------------------|--------------------------------|-----------------------|----------------------|
| 30.000 | 5.069 | 0.000 | 5.069 | 51,649.997 | 162,262.326 |
| 30.010 | 5.073 | 0.000 | 5.073 | 51,679.484 | 162,778.985 |
| 30.020 | 5.078 | 0.000 | 5.078 | 51,708.977 | 163,295.939 |
| 30.030 | 5.083 | 0.000 | 5.083 | 51,738.478 | 163,813.189 |
| 30.040 | 5.087 | 0.000 | 5.087 | 51,767.987 | 164,330.733 |
| 30.050 | 5.092 | 0.000 | 5.092 | 51,797.500 | 164,848.473 |
| 30.060 | 5.096 | 0.000 | 5.096 | 51,827.026 | 165,366.608 |
| 30.070 | 5.101 | 0.000 | 5.101 | 51,856.561 | 165,885.038 |
| 30.080 | 5.105 | 0.000 | 5.105 | 51,886.104 | 166,403.763 |
| 30.090 | 5.110 | 0.000 | 5.110 | 51,915.655 | 166,922.783 |
| 30.100 | 5.114 | 0.000 | 5.114 | 51,945.215 | 167,442.100 |
| 30.110 | 5.119 | 0.000 | 5.119 | 51,974.783 | 167,961.712 |
| 30.120 | 5.123 | 0.000 | 5.123 | 52,004.360 | 168,481.619 |
| 30.130 | 5.128 | 0.000 | 5.128 | 52,033.940 | 169,001.723 |
| 30.140 | 5.132 | 0.000 | 5.132 | 52,063.533 | 169,522.223 |
| 30.150 | 5.137 | 0.000 | 5.137 | 52,093.135 | 170,043.018 |
| 30.160 | 5.141 | 0.000 | 5.141 | 52,122.746 | 170,564.109 |
| 30.170 | 5.146 | 0.000 | 5.146 | 52,152.365 | 171,085.497 |
| 30.180 | 5.150 | 0.000 | 5.150 | 52,181.992 | 171,607.180 |
| 30.190 | 5.155 | 0.000 | 5.155 | 52,211.627 | 172,129.161 |
| 30.200 | 5.159 | 0.000 | 5.159 | 52,241.272 | 172,651.437 |
| 30.210 | 5.164 | 0.000 | 5.164 | 52,270.918 | 173,173.910 |
| 30.220 | 5.168 | 0.000 | 5.168 | 52,300.579 | 173,696.780 |
| 30.230 | 5.173 | 0.000 | 5.173 | 52,330.249 | 174,219.946 |
| 30.240 | 5.177 | 0.000 | 5.177 | 52,359.926 | 174,743.409 |
| 30.250 | 5.182 | 0.000 | 5.182 | 52,389.612 | 175,267.168 |
| 30.260 | 5.186 | 0.000 | 5.186 | 52,419.307 | 175,791.225 |
| 30.270 | 5.191 | 0.000 | 5.191 | 52,449.010 | 176,315.579 |
| 30.280 | 5.195 | 0.000 | 5.195 | 52,478.721 | 176,840.229 |
| 30.290 | 5.200 | 0.000 | 5.200 | 52,508.441 | 177,365.177 |
| 30.300 | 5.204 | 0.000 | 5.204 | 52,538.164 | 177,890.322 |
| 30.310 | 5.209 | 0.000 | 5.209 | 52,567.900 | 178,415.864 |
| 30.320 | 5.213 | 0.000 | 5.213 | 52,597.645 | 178,941.704 |
| 30.330 | 5.217 | 0.000 | 5.217 | 52,627.399 | 179,467.841 |
| 30.340 | 5.222 | 0.000 | 5.222 | 52,657.160 | 179,994.276 |
| 30.350 | 5.226 | 0.000 | 5.226 | 52,686.931 | 180,521.009 |
| 30.360 | 5.231 | 0.000 | 5.231 | 52,716.709 | 181,048.039 |
| 30.370 | 5.235 | 0.000 | 5.235 | 52,746.496 | 181,575.367 |
| 30.380 | 5.240 | 0.000 | 5.240 | 52,776.286 | 182,102.892 |
| 30.390 | 5.244 | 0.000 | 5.244 | 52,806.090 | 182,630.816 |

V. 放流特性

| 貯水位高 (m) | オリフィス放流量 (m ³ /sec) | 洪水吐き放流量 (m ³ /sec) | 放流量合計 (m ³ /sec) | 湛水面積(m ²) | 貯留量(m ³) |
|-------------|-----------------------------------|----------------------------------|--------------------------------|-----------------------|----------------------|
| 30.400 | 5.248 | 0.000 | 5.248 | 52,835.902 | 183,159.038 |
| 30.410 | 5.253 | 0.000 | 5.253 | 52,865.723 | 183,687.559 |
| 30.420 | 5.257 | 0.000 | 5.257 | 52,895.552 | 184,216.377 |
| 30.430 | 5.262 | 0.000 | 5.262 | 52,925.390 | 184,745.494 |
| 30.440 | 5.266 | 0.000 | 5.266 | 52,955.236 | 185,274.909 |
| 30.450 | 5.270 | 0.000 | 5.270 | 52,985.090 | 185,804.623 |
| 30.460 | 5.275 | 0.000 | 5.275 | 53,014.947 | 186,334.534 |
| 30.470 | 5.279 | 0.000 | 5.279 | 53,044.819 | 186,864.845 |
| 30.480 | 5.284 | 0.000 | 5.284 | 53,074.698 | 187,395.455 |
| 30.490 | 5.288 | 0.000 | 5.288 | 53,104.586 | 187,926.364 |
| 30.500 | 5.292 | 0.000 | 5.292 | 53,134.483 | 188,457.571 |
| 30.510 | 5.297 | 0.000 | 5.297 | 53,164.388 | 188,989.078 |
| 30.520 | 5.301 | 0.000 | 5.301 | 53,194.301 | 189,520.883 |
| 30.530 | 5.305 | 0.000 | 5.305 | 53,224.222 | 190,052.988 |
| 30.540 | 5.310 | 0.000 | 5.310 | 53,254.153 | 190,585.392 |
| 30.550 | 5.314 | 0.000 | 5.314 | 53,284.085 | 191,117.994 |
| 30.560 | 5.318 | 0.000 | 5.318 | 53,314.032 | 191,650.997 |
| 30.570 | 5.323 | 0.000 | 5.323 | 53,343.988 | 192,184.299 |
| 30.580 | 5.327 | 0.000 | 5.327 | 53,373.951 | 192,717.901 |
| 30.590 | 5.331 | 0.000 | 5.331 | 53,403.924 | 193,251.803 |
| 30.600 | 5.336 | 0.000 | 5.336 | 53,433.904 | 193,786.004 |
| 30.610 | 5.340 | 0.000 | 5.340 | 53,463.893 | 194,320.505 |
| 30.620 | 5.344 | 0.000 | 5.344 | 53,493.891 | 194,855.306 |
| 30.630 | 5.349 | 0.000 | 5.349 | 53,523.891 | 195,390.305 |
| 30.640 | 5.353 | 0.000 | 5.353 | 53,553.905 | 195,925.707 |
| 30.650 | 5.357 | 0.000 | 5.357 | 53,583.927 | 196,461.408 |
| 30.660 | 5.362 | 0.000 | 5.362 | 53,613.959 | 196,997.410 |
| 30.670 | 5.366 | 0.000 | 5.366 | 53,643.998 | 197,533.712 |
| 30.680 | 5.370 | 0.000 | 5.370 | 53,674.046 | 198,070.314 |
| 30.690 | 5.375 | 0.000 | 5.375 | 53,704.102 | 198,607.217 |
| 30.700 | 5.379 | 0.000 | 5.379 | 53,734.167 | 199,144.421 |
| 30.710 | 5.383 | 0.000 | 5.383 | 53,764.234 | 199,681.823 |
| 30.720 | 5.388 | 0.000 | 5.388 | 53,794.316 | 200,219.628 |
| 30.730 | 5.392 | 0.000 | 5.392 | 53,824.406 | 200,757.734 |
| 30.740 | 5.396 | 0.000 | 5.396 | 53,854.504 | 201,296.141 |
| 30.750 | 5.401 | 0.000 | 5.401 | 53,884.611 | 201,834.849 |
| 30.760 | 5.405 | 0.000 | 5.405 | 53,914.726 | 202,373.858 |
| 30.770 | 5.409 | 0.000 | 5.409 | 53,944.850 | 202,913.168 |
| 30.780 | 5.413 | 0.000 | 5.413 | 53,974.982 | 203,452.779 |
| 30.790 | 5.418 | 0.000 | 5.418 | 54,005.122 | 203,992.692 |

V. 放流特性

| 貯水位高 (m) | オリフィス放流量 (m ³ /sec) | 洪水吐き放流量 (m ³ /sec) | 放流量合計 (m ³ /sec) | 湛水面積(m ²) | 貯留量(m ³) |
|-------------|-----------------------------------|----------------------------------|--------------------------------|-----------------------|----------------------|
| 30.800 | 5.422 | 0.000 | 5.422 | 54,035.265 | 204,532.804 |
| 30.810 | 5.426 | 0.000 | 5.426 | 54,065.422 | 205,073.319 |
| 30.820 | 5.430 | 0.000 | 5.430 | 54,095.588 | 205,614.137 |
| 30.830 | 5.435 | 0.000 | 5.435 | 54,125.762 | 206,155.256 |
| 30.840 | 5.439 | 0.000 | 5.439 | 54,155.945 | 206,696.677 |
| 30.850 | 5.443 | 0.000 | 5.443 | 54,186.136 | 207,238.400 |
| 30.860 | 5.447 | 0.000 | 5.447 | 54,216.335 | 207,780.424 |
| 30.870 | 5.452 | 0.000 | 5.452 | 54,246.543 | 208,322.751 |
| 30.880 | 5.456 | 0.000 | 5.456 | 54,276.753 | 208,865.277 |
| 30.890 | 5.460 | 0.000 | 5.460 | 54,306.977 | 209,408.208 |
| 30.900 | 5.464 | 0.000 | 5.464 | 54,337.210 | 209,951.441 |
| 30.910 | 5.469 | 0.000 | 5.469 | 54,367.452 | 210,494.977 |
| 30.920 | 5.473 | 0.000 | 5.473 | 54,397.702 | 211,038.815 |
| 30.930 | 5.477 | 0.000 | 5.477 | 54,427.960 | 211,582.956 |
| 30.940 | 5.481 | 0.000 | 5.481 | 54,458.226 | 212,127.399 |
| 30.950 | 5.486 | 0.000 | 5.486 | 54,488.501 | 212,672.145 |
| 30.960 | 5.490 | 0.000 | 5.490 | 54,518.779 | 213,217.090 |
| 30.970 | 5.494 | 0.000 | 5.494 | 54,549.071 | 213,762.442 |
| 30.980 | 5.498 | 0.000 | 5.498 | 54,579.371 | 214,308.097 |
| 30.990 | 5.502 | 0.000 | 5.502 | 54,609.680 | 214,854.055 |
| 31.000 | 5.507 | 0.000 | 5.507 | 54,639.997 | 215,400.315 |
| 31.010 | 5.511 | 0.000 | 5.511 | 54,667.752 | 215,946.867 |
| 31.020 | 5.515 | 0.000 | 5.515 | 54,695.511 | 216,493.695 |
| 31.030 | 5.519 | 0.000 | 5.519 | 54,723.277 | 217,040.802 |
| 31.040 | 5.523 | 0.000 | 5.523 | 54,751.050 | 217,588.186 |
| 31.050 | 5.528 | 0.000 | 5.528 | 54,778.825 | 218,135.743 |
| 31.060 | 5.532 | 0.000 | 5.532 | 54,806.612 | 218,683.683 |
| 31.070 | 5.536 | 0.000 | 5.536 | 54,834.406 | 219,231.901 |
| 31.080 | 5.540 | 0.000 | 5.540 | 54,862.207 | 219,780.396 |
| 31.090 | 5.544 | 0.000 | 5.544 | 54,890.016 | 220,329.170 |
| 31.100 | 5.548 | 0.000 | 5.548 | 54,917.831 | 220,878.222 |
| 31.110 | 5.553 | 0.000 | 5.553 | 54,945.653 | 221,427.552 |
| 31.120 | 5.557 | 0.000 | 5.557 | 54,973.483 | 221,977.160 |
| 31.130 | 5.561 | 0.000 | 5.561 | 55,001.314 | 222,526.942 |
| 31.140 | 5.565 | 0.000 | 5.565 | 55,029.157 | 223,077.107 |
| 31.150 | 5.569 | 0.000 | 5.569 | 55,057.008 | 223,627.550 |
| 31.160 | 5.573 | 0.000 | 5.573 | 55,084.865 | 224,178.272 |
| 31.170 | 5.578 | 0.000 | 5.578 | 55,112.730 | 224,729.273 |
| 31.180 | 5.582 | 0.000 | 5.582 | 55,140.602 | 225,280.552 |
| 31.190 | 5.586 | 0.000 | 5.586 | 55,168.481 | 225,832.110 |

V. 放流特性

| 貯水位高 (m) | オリフィス放流量 (m ³ /sec) | 洪水吐き放流量 (m ³ /sec) | 放流量合計 (m ³ /sec) | 湛水面積(m ²) | 貯留量(m ³) |
|-------------|-----------------------------------|----------------------------------|--------------------------------|-----------------------|----------------------|
| 31.200 | 5.590 | 0.000 | 5.590 | 55,196.366 | 226,383.947 |
| 31.210 | 5.594 | 0.000 | 5.594 | 55,224.254 | 226,935.957 |
| 31.220 | 5.598 | 0.000 | 5.598 | 55,252.154 | 227,488.352 |
| 31.230 | 5.602 | 0.000 | 5.602 | 55,280.061 | 228,041.025 |
| 31.240 | 5.607 | 0.000 | 5.607 | 55,307.975 | 228,593.978 |
| 31.250 | 5.611 | 0.000 | 5.611 | 55,335.896 | 229,147.210 |
| 31.260 | 5.615 | 0.000 | 5.615 | 55,363.824 | 229,700.722 |
| 31.270 | 5.619 | 0.000 | 5.619 | 55,391.759 | 230,254.512 |
| 31.280 | 5.623 | 0.000 | 5.623 | 55,419.701 | 230,808.582 |
| 31.290 | 5.627 | 0.000 | 5.627 | 55,447.650 | 231,362.931 |
| 31.300 | 5.631 | 0.000 | 5.631 | 55,475.601 | 231,917.455 |
| 31.310 | 5.635 | 0.000 | 5.635 | 55,503.564 | 232,472.363 |
| 31.320 | 5.640 | 0.000 | 5.640 | 55,531.534 | 233,027.551 |
| 31.330 | 5.644 | 0.000 | 5.644 | 55,559.512 | 233,583.019 |
| 31.340 | 5.648 | 0.000 | 5.648 | 55,587.496 | 234,138.767 |
| 31.350 | 5.652 | 0.000 | 5.652 | 55,615.488 | 234,694.795 |
| 31.360 | 5.656 | 0.000 | 5.656 | 55,643.486 | 235,251.102 |
| 31.370 | 5.660 | 0.000 | 5.660 | 55,671.492 | 235,807.690 |
| 31.380 | 5.664 | 0.000 | 5.664 | 55,699.499 | 236,364.451 |
| 31.390 | 5.668 | 0.000 | 5.668 | 55,727.519 | 236,921.599 |
| 31.400 | 5.672 | 0.000 | 5.672 | 55,755.545 | 237,479.027 |
| 31.410 | 5.676 | 0.000 | 5.676 | 55,783.579 | 238,036.736 |
| 31.420 | 5.680 | 0.000 | 5.680 | 55,811.620 | 238,594.724 |
| 31.430 | 5.684 | 0.000 | 5.684 | 55,839.668 | 239,152.993 |
| 31.440 | 5.689 | 0.000 | 5.689 | 55,867.723 | 239,711.543 |
| 31.450 | 5.693 | 0.000 | 5.693 | 55,895.784 | 240,270.373 |
| 31.460 | 5.697 | 0.000 | 5.697 | 55,923.848 | 240,829.378 |
| 31.470 | 5.701 | 0.000 | 5.701 | 55,951.924 | 241,388.769 |
| 31.480 | 5.705 | 0.000 | 5.705 | 55,980.007 | 241,948.442 |
| 31.490 | 5.709 | 0.000 | 5.709 | 56,008.097 | 242,508.395 |
| 31.500 | 5.713 | 0.000 | 5.713 | 56,036.194 | 243,068.629 |
| 31.510 | 5.717 | 0.000 | 5.717 | 56,064.299 | 243,629.145 |
| 31.520 | 5.721 | 0.000 | 5.721 | 56,092.410 | 244,189.941 |
| 31.530 | 5.725 | 0.000 | 5.725 | 56,120.528 | 244,751.019 |
| 31.540 | 5.729 | 0.000 | 5.729 | 56,148.653 | 245,312.377 |
| 31.550 | 5.733 | 0.000 | 5.733 | 56,176.780 | 245,873.910 |
| 31.560 | 5.737 | 0.000 | 5.737 | 56,204.920 | 246,435.832 |
| 31.570 | 5.741 | 0.000 | 5.741 | 56,233.066 | 246,998.034 |
| 31.580 | 5.745 | 0.000 | 5.745 | 56,261.220 | 247,560.519 |
| 31.590 | 5.749 | 0.000 | 5.749 | 56,289.380 | 248,123.284 |

V. 放流特性

| 貯水位高 (m) | オリフィス放流量 (m ³ /sec) | 洪水吐き放流量 (m ³ /sec) | 放流量合計 (m ³ /sec) | 湛水面積(m ²) | 貯留量(m ³) |
|-------------|-----------------------------------|----------------------------------|--------------------------------|-----------------------|----------------------|
| 31.600 | 5.753 | 0.000 | 5.753 | 56,317.548 | 248,686.332 |
| 31.610 | 5.757 | 0.000 | 5.757 | 56,345.723 | 249,249.661 |
| 31.620 | 5.761 | 0.000 | 5.761 | 56,373.904 | 249,813.272 |
| 31.630 | 5.765 | 0.000 | 5.765 | 56,402.088 | 250,377.058 |
| 31.640 | 5.769 | 0.000 | 5.769 | 56,430.283 | 250,941.232 |
| 31.650 | 5.773 | 0.000 | 5.773 | 56,458.486 | 251,505.689 |
| 31.660 | 5.777 | 0.000 | 5.777 | 56,486.696 | 252,070.428 |
| 31.670 | 5.781 | 0.000 | 5.781 | 56,514.913 | 252,635.449 |
| 31.680 | 5.785 | 0.000 | 5.785 | 56,543.137 | 253,200.752 |
| 31.690 | 5.789 | 0.000 | 5.789 | 56,571.368 | 253,766.337 |
| 31.700 | 5.793 | 0.000 | 5.793 | 56,599.606 | 254,332.205 |
| 31.710 | 5.797 | 0.000 | 5.797 | 56,627.846 | 254,898.247 |
| 31.720 | 5.801 | 0.000 | 5.801 | 56,656.098 | 255,464.680 |
| 31.730 | 5.805 | 0.000 | 5.805 | 56,684.357 | 256,031.395 |
| 31.740 | 5.809 | 0.000 | 5.809 | 56,712.623 | 256,598.393 |
| 31.750 | 5.813 | 0.000 | 5.813 | 56,740.897 | 257,165.674 |
| 31.760 | 5.817 | 0.000 | 5.817 | 56,769.177 | 257,733.237 |
| 31.770 | 5.821 | 0.000 | 5.821 | 56,797.464 | 258,301.083 |
| 31.780 | 5.825 | 0.000 | 5.825 | 56,825.759 | 258,869.212 |
| 31.790 | 5.829 | 0.000 | 5.829 | 56,854.060 | 259,437.625 |
| 31.800 | 5.833 | 0.000 | 5.833 | 56,882.363 | 260,006.211 |
| 31.810 | 5.837 | 0.000 | 5.837 | 56,910.679 | 260,575.189 |
| 31.820 | 5.841 | 0.000 | 5.841 | 56,939.002 | 261,144.451 |
| 31.830 | 5.845 | 0.000 | 5.845 | 56,967.331 | 261,713.995 |
| 31.840 | 5.849 | 0.000 | 5.849 | 56,995.668 | 262,283.823 |
| 31.850 | 5.853 | 0.000 | 5.853 | 57,024.012 | 262,853.935 |
| 31.860 | 5.857 | 0.000 | 5.857 | 57,052.363 | 263,424.330 |
| 31.870 | 5.861 | 0.000 | 5.861 | 57,080.720 | 263,995.008 |
| 31.880 | 5.865 | 0.000 | 5.865 | 57,109.080 | 264,565.861 |
| 31.890 | 5.869 | 0.000 | 5.869 | 57,137.452 | 265,137.107 |
| 31.900 | 5.873 | 0.000 | 5.873 | 57,165.831 | 265,708.637 |
| 31.910 | 5.877 | 0.000 | 5.877 | 57,194.217 | 266,280.450 |
| 31.920 | 5.881 | 0.000 | 5.881 | 57,222.610 | 266,852.547 |
| 31.930 | 5.885 | 0.000 | 5.885 | 57,251.010 | 267,424.928 |
| 31.940 | 5.889 | 0.000 | 5.889 | 57,279.417 | 267,997.594 |
| 31.950 | 5.892 | 0.000 | 5.892 | 57,307.831 | 268,570.543 |
| 31.960 | 5.896 | 0.000 | 5.896 | 57,336.247 | 269,143.667 |
| 31.970 | 5.900 | 0.000 | 5.900 | 57,364.675 | 269,717.185 |
| 31.980 | 5.904 | 0.000 | 5.904 | 57,393.111 | 270,290.987 |
| 31.990 | 5.908 | 0.000 | 5.908 | 57,421.553 | 270,865.073 |

V. 放流特性

| 貯水位高 (m) | オリフィス放流量 (m ³ /sec) | 洪水吐き放流量 (m ³ /sec) | 放流量合計 (m ³ /sec) | 湛水面積(m ²) | 貯留量(m ³) |
|-------------|-----------------------------------|----------------------------------|--------------------------------|-----------------------|----------------------|
| 32.000 | 5.912 | 0.000 | 5.912 | 57,450.003 | 271,439.444 |
| 32.010 | 5.916 | 0.000 | 5.916 | 57,476.200 | 272,013.979 |
| 32.020 | 5.920 | 0.000 | 5.920 | 57,502.416 | 272,588.995 |
| 32.030 | 5.924 | 0.000 | 5.924 | 57,528.628 | 273,164.053 |
| 32.040 | 5.928 | 0.000 | 5.928 | 57,554.855 | 273,739.594 |
| 32.050 | 5.932 | 0.000 | 5.932 | 57,581.079 | 274,315.177 |
| 32.060 | 5.935 | 0.000 | 5.935 | 57,607.319 | 274,891.242 |
| 32.070 | 5.939 | 0.000 | 5.939 | 57,633.555 | 275,467.349 |
| 32.080 | 5.943 | 0.000 | 5.943 | 57,659.806 | 276,043.939 |
| 32.090 | 5.947 | 0.000 | 5.947 | 57,686.054 | 276,620.572 |
| 32.100 | 5.951 | 0.000 | 5.951 | 57,712.307 | 277,197.467 |
| 32.110 | 5.955 | 0.000 | 5.955 | 57,738.577 | 277,774.844 |
| 32.120 | 5.959 | 0.000 | 5.959 | 57,764.843 | 278,352.264 |
| 32.130 | 5.963 | 0.000 | 5.963 | 57,791.124 | 278,930.168 |
| 32.140 | 5.967 | 0.000 | 5.967 | 57,817.402 | 279,508.113 |
| 32.150 | 5.970 | 0.000 | 5.970 | 57,843.695 | 280,086.542 |
| 32.160 | 5.974 | 0.000 | 5.974 | 57,869.985 | 280,665.014 |
| 32.170 | 5.978 | 0.000 | 5.978 | 57,896.280 | 281,243.748 |
| 32.180 | 5.982 | 0.000 | 5.982 | 57,922.592 | 281,822.966 |
| 32.190 | 5.986 | 0.000 | 5.986 | 57,948.899 | 282,402.226 |
| 32.200 | 5.990 | 0.000 | 5.990 | 57,975.222 | 282,981.970 |
| 32.210 | 5.994 | 0.000 | 5.994 | 58,001.542 | 283,561.757 |
| 32.220 | 5.998 | 0.000 | 5.998 | 58,027.877 | 284,142.028 |
| 32.230 | 6.001 | 0.000 | 6.001 | 58,054.208 | 284,722.341 |
| 32.240 | 6.005 | 0.000 | 6.005 | 58,080.556 | 285,303.139 |
| 32.250 | 6.009 | 0.000 | 6.009 | 58,106.899 | 285,883.979 |
| 32.260 | 6.013 | 0.000 | 6.013 | 58,133.248 | 286,465.082 |
| 32.270 | 6.017 | 0.000 | 6.017 | 58,159.613 | 287,046.670 |
| 32.280 | 6.021 | 0.000 | 6.021 | 58,185.974 | 287,628.301 |
| 32.290 | 6.025 | 0.000 | 6.025 | 58,212.352 | 288,210.417 |
| 32.300 | 6.028 | 0.000 | 6.028 | 58,238.725 | 288,792.574 |
| 32.310 | 6.032 | 0.000 | 6.032 | 58,265.114 | 289,375.218 |
| 32.320 | 6.036 | 0.000 | 6.036 | 58,291.499 | 289,957.903 |
| 32.330 | 6.040 | 0.000 | 6.040 | 58,317.900 | 290,541.075 |
| 32.340 | 6.044 | 0.000 | 6.044 | 58,344.297 | 291,124.288 |
| 32.350 | 6.048 | 0.000 | 6.048 | 58,370.700 | 291,707.765 |
| 32.360 | 6.051 | 0.000 | 6.051 | 58,397.119 | 292,291.728 |
| 32.370 | 6.055 | 0.000 | 6.055 | 58,423.534 | 292,875.734 |
| 32.380 | 6.059 | 0.000 | 6.059 | 58,449.965 | 293,460.226 |
| 32.390 | 6.063 | 0.000 | 6.063 | 58,476.392 | 294,044.760 |

V. 放流特性

| 貯水位高 (m) | オリフィス放流量 (m ³ /sec) | 洪水吐き放流量 (m ³ /sec) | 放流量合計 (m ³ /sec) | 湛水面積(m ²) | 貯留量(m ³) |
|-------------|-----------------------------------|----------------------------------|--------------------------------|-----------------------|----------------------|
| 32.400 | 6.067 | 0.000 | 6.067 | 58,502.835 | 294,629.781 |
| 32.410 | 6.070 | 0.000 | 6.070 | 58,529.273 | 295,214.843 |
| 32.420 | 6.074 | 0.000 | 6.074 | 58,555.718 | 295,800.170 |
| 32.430 | 6.078 | 0.000 | 6.078 | 58,582.179 | 296,385.984 |
| 32.440 | 6.082 | 0.000 | 6.082 | 58,608.636 | 296,971.840 |
| 32.450 | 6.086 | 0.000 | 6.086 | 58,635.109 | 297,558.184 |
| 32.460 | 6.089 | 0.000 | 6.089 | 58,661.577 | 298,144.569 |
| 32.470 | 6.093 | 0.000 | 6.093 | 58,688.062 | 298,731.442 |
| 32.480 | 6.097 | 0.000 | 6.097 | 58,714.543 | 299,318.357 |
| 32.490 | 6.101 | 0.000 | 6.101 | 58,741.039 | 299,905.760 |
| 32.500 | 6.105 | 0.000 | 6.105 | 58,767.532 | 300,493.205 |
| 32.510 | 6.108 | 0.000 | 6.108 | 58,794.030 | 301,080.914 |
| 32.520 | 6.112 | 0.000 | 6.112 | 58,820.545 | 301,669.112 |
| 32.530 | 6.116 | 0.000 | 6.116 | 58,847.056 | 302,257.351 |
| 32.540 | 6.120 | 0.000 | 6.120 | 58,873.582 | 302,846.080 |
| 32.550 | 6.124 | 0.000 | 6.124 | 58,900.105 | 303,434.850 |
| 32.560 | 6.127 | 0.000 | 6.127 | 58,926.643 | 304,024.109 |
| 32.570 | 6.131 | 0.000 | 6.131 | 58,953.178 | 304,613.410 |
| 32.580 | 6.135 | 0.000 | 6.135 | 58,979.728 | 305,203.200 |
| 32.590 | 6.139 | 0.000 | 6.139 | 59,006.274 | 305,793.031 |
| 32.600 | 6.142 | 0.000 | 6.142 | 59,032.827 | 306,383.128 |
| 32.610 | 6.146 | 0.000 | 6.146 | 59,059.395 | 306,973.715 |
| 32.620 | 6.150 | 0.000 | 6.150 | 59,085.959 | 307,564.342 |
| 32.630 | 6.154 | 0.000 | 6.154 | 59,112.540 | 308,155.461 |
| 32.640 | 6.158 | 0.000 | 6.158 | 59,139.116 | 308,746.620 |
| 32.650 | 6.161 | 0.000 | 6.161 | 59,165.708 | 309,338.271 |
| 32.660 | 6.165 | 0.000 | 6.165 | 59,192.296 | 309,929.961 |
| 32.670 | 6.169 | 0.000 | 6.169 | 59,218.891 | 310,521.918 |
| 32.680 | 6.173 | 0.000 | 6.173 | 59,245.501 | 311,114.366 |
| 32.690 | 6.176 | 0.000 | 6.176 | 59,272.107 | 311,706.855 |
| 32.700 | 6.180 | 0.000 | 6.180 | 59,298.729 | 312,299.836 |
| 32.710 | 6.184 | 0.000 | 6.184 | 59,325.347 | 312,892.857 |
| 32.720 | 6.188 | 0.000 | 6.188 | 59,351.981 | 313,486.370 |
| 32.730 | 6.191 | 0.000 | 6.191 | 59,378.611 | 314,079.923 |
| 32.740 | 6.195 | 0.000 | 6.195 | 59,405.257 | 314,673.969 |
| 32.750 | 6.199 | 0.000 | 6.199 | 59,431.899 | 315,268.056 |
| 32.760 | 6.202 | 0.000 | 6.202 | 59,458.547 | 315,862.408 |
| 32.770 | 6.206 | 0.000 | 6.206 | 59,485.211 | 316,457.254 |
| 32.780 | 6.210 | 0.000 | 6.210 | 59,511.871 | 317,052.139 |
| 32.790 | 6.214 | 0.000 | 6.214 | 59,538.547 | 317,647.519 |

V. 放流特性

| 貯水位高 (m) | オリフィス放流量 (m ³ /sec) | 洪水吐き放流量 (m ³ /sec) | 放流量合計 (m ³ /sec) | 湛水面積(m ²) | 貯留量(m ³) |
|-------------|-----------------------------------|----------------------------------|--------------------------------|-----------------------|----------------------|
| 32.800 | 6.217 | 0.000 | 6.217 | 59,565.219 | 318,242.937 |
| 32.810 | 6.221 | 0.000 | 6.221 | 59,591.907 | 318,838.850 |
| 32.820 | 6.225 | 0.000 | 6.225 | 59,618.590 | 319,434.803 |
| 32.830 | 6.229 | 0.000 | 6.229 | 59,645.290 | 320,031.250 |
| 32.840 | 6.232 | 0.000 | 6.232 | 59,671.986 | 320,627.736 |
| 32.850 | 6.236 | 0.000 | 6.236 | 59,698.688 | 321,224.489 |
| 32.860 | 6.240 | 0.000 | 6.240 | 59,725.406 | 321,821.737 |
| 32.870 | 6.243 | 0.000 | 6.243 | 59,752.119 | 322,419.024 |
| 32.880 | 6.247 | 0.000 | 6.247 | 59,778.849 | 323,016.807 |
| 32.890 | 6.251 | 0.000 | 6.251 | 59,805.574 | 323,614.629 |
| 32.900 | 6.255 | 0.000 | 6.255 | 59,832.316 | 324,212.946 |
| 32.910 | 6.258 | 0.000 | 6.258 | 59,859.054 | 324,811.302 |
| 32.920 | 6.262 | 0.000 | 6.262 | 59,885.797 | 325,409.926 |
| 32.930 | 6.266 | 0.000 | 6.266 | 59,912.557 | 326,009.046 |
| 32.940 | 6.269 | 0.000 | 6.269 | 59,939.312 | 326,608.204 |
| 32.950 | 6.273 | 0.000 | 6.273 | 59,966.084 | 327,207.859 |
| 32.960 | 6.277 | 0.000 | 6.277 | 59,992.851 | 327,807.553 |
| 32.970 | 6.280 | 0.000 | 6.280 | 60,019.635 | 328,407.744 |
| 32.980 | 6.284 | 0.000 | 6.284 | 60,046.414 | 329,007.974 |
| 32.990 | 6.288 | 0.000 | 6.288 | 60,073.210 | 329,608.700 |
| 33.000 | 6.291 | 0.000 | 6.291 | 60,100.001 | 330,209.465 |
| 33.010 | 6.295 | 0.000 | 6.295 | 60,129.731 | 330,810.513 |
| 33.020 | 6.299 | 0.000 | 6.299 | 60,159.481 | 331,412.087 |
| 33.030 | 6.302 | 0.000 | 6.302 | 60,189.226 | 332,013.730 |
| 33.040 | 6.306 | 0.000 | 6.306 | 60,218.991 | 332,615.900 |
| 33.050 | 6.310 | 0.000 | 6.310 | 60,248.751 | 333,218.137 |
| 33.060 | 6.313 | 0.000 | 6.313 | 60,278.530 | 333,820.902 |
| 33.070 | 6.317 | 0.000 | 6.317 | 60,308.305 | 334,423.735 |
| 33.080 | 6.321 | 0.000 | 6.321 | 60,338.099 | 335,027.096 |
| 33.090 | 6.324 | 0.000 | 6.324 | 60,367.889 | 335,630.525 |
| 33.100 | 6.328 | 0.000 | 6.328 | 60,397.686 | 336,234.251 |
| 33.110 | 6.332 | 0.000 | 6.332 | 60,427.502 | 336,838.506 |
| 33.120 | 6.335 | 0.000 | 6.335 | 60,457.314 | 337,442.829 |
| 33.130 | 6.339 | 0.000 | 6.339 | 60,487.144 | 338,047.680 |
| 33.140 | 6.343 | 0.000 | 6.343 | 60,516.971 | 338,652.599 |
| 33.150 | 6.346 | 0.000 | 6.346 | 60,546.816 | 339,258.048 |
| 33.160 | 6.350 | 0.000 | 6.350 | 60,576.658 | 339,863.563 |
| 33.170 | 6.354 | 0.000 | 6.354 | 60,606.506 | 340,469.377 |
| 33.180 | 6.357 | 0.000 | 6.357 | 60,636.374 | 341,075.721 |
| 33.190 | 6.361 | 0.000 | 6.361 | 60,666.237 | 341,682.133 |

V. 放流特性

| 貯水位高 (m) | オリフィス放流量 (m ³ /sec) | 洪水吐き放流量 (m ³ /sec) | 放流量合計 (m ³ /sec) | 湛水面積(m ²) | 貯留量(m ³) |
|-------------|-----------------------------------|----------------------------------|--------------------------------|-----------------------|----------------------|
| 33.200 | 6.365 | 0.000 | 6.365 | 60,696.119 | 342,289.074 |
| 33.210 | 6.368 | 0.000 | 6.368 | 60,725.997 | 342,896.083 |
| 33.220 | 6.372 | 0.000 | 6.372 | 60,755.894 | 343,503.622 |
| 33.230 | 6.375 | 0.000 | 6.375 | 60,785.787 | 344,111.228 |
| 33.240 | 6.379 | 0.000 | 6.379 | 60,815.698 | 344,719.365 |
| 33.250 | 6.383 | 0.000 | 6.383 | 60,845.606 | 345,327.570 |
| 33.260 | 6.386 | 0.000 | 6.386 | 60,875.520 | 345,936.073 |
| 33.270 | 6.390 | 0.000 | 6.390 | 60,905.454 | 346,545.108 |
| 33.280 | 6.394 | 0.000 | 6.394 | 60,935.383 | 347,154.210 |
| 33.290 | 6.397 | 0.000 | 6.397 | 60,965.332 | 347,763.844 |
| 33.300 | 6.401 | 0.000 | 6.401 | 60,995.276 | 348,373.545 |
| 33.310 | 6.404 | 0.000 | 6.404 | 61,025.239 | 348,983.778 |
| 33.320 | 6.408 | 0.000 | 6.408 | 61,055.198 | 349,594.077 |
| 33.330 | 6.412 | 0.000 | 6.412 | 61,085.176 | 350,204.910 |
| 33.340 | 6.415 | 0.000 | 6.415 | 61,115.149 | 350,815.809 |
| 33.350 | 6.419 | 0.000 | 6.419 | 61,145.130 | 351,427.007 |
| 33.360 | 6.422 | 0.000 | 6.422 | 61,175.130 | 352,038.739 |
| 33.370 | 6.426 | 0.000 | 6.426 | 61,205.126 | 352,650.538 |
| 33.380 | 6.430 | 0.000 | 6.430 | 61,235.140 | 353,262.870 |
| 33.390 | 6.433 | 0.000 | 6.433 | 61,265.151 | 353,875.269 |
| 33.400 | 6.437 | 0.000 | 6.437 | 61,295.180 | 354,488.201 |
| 33.410 | 6.440 | 0.000 | 6.440 | 61,325.205 | 355,101.200 |
| 33.420 | 6.444 | 0.000 | 6.444 | 61,355.237 | 355,714.499 |
| 33.430 | 6.448 | 0.000 | 6.448 | 61,385.289 | 356,328.333 |
| 33.440 | 6.451 | 0.000 | 6.451 | 61,415.336 | 356,942.233 |
| 33.450 | 6.455 | 0.000 | 6.455 | 61,445.402 | 357,556.668 |
| 33.460 | 6.458 | 0.000 | 6.458 | 61,475.464 | 358,171.169 |
| 33.470 | 6.462 | 0.000 | 6.462 | 61,505.544 | 358,786.206 |
| 33.480 | 6.466 | 0.000 | 6.466 | 61,535.621 | 359,401.308 |
| 33.490 | 6.469 | 0.000 | 6.469 | 61,565.716 | 360,016.946 |
| 33.500 | 6.473 | 0.000 | 6.473 | 61,595.808 | 360,632.651 |
| 33.510 | 6.476 | 0.000 | 6.476 | 61,625.906 | 361,248.656 |
| 33.520 | 6.480 | 0.000 | 6.480 | 61,656.024 | 361,865.197 |
| 33.530 | 6.483 | 0.000 | 6.483 | 61,686.137 | 362,481.804 |
| 33.540 | 6.487 | 0.000 | 6.487 | 61,716.269 | 363,098.948 |
| 33.550 | 6.491 | 0.000 | 6.491 | 61,746.397 | 363,716.158 |
| 33.560 | 6.494 | 0.000 | 6.494 | 61,776.544 | 364,333.904 |
| 33.570 | 6.498 | 0.000 | 6.498 | 61,806.687 | 364,951.717 |
| 33.580 | 6.501 | 0.000 | 6.501 | 61,836.849 | 365,570.067 |
| 33.590 | 6.505 | 0.000 | 6.505 | 61,867.006 | 366,188.482 |

V. 放流特性

| 貯水位高 (m) | オリフィス放流量 (m ³ /sec) | 洪水吐き放流量 (m ³ /sec) | 放流量合計 (m ³ /sec) | 湛水面積(m ²) | 貯留量(m ³) |
|-------------|-----------------------------------|----------------------------------|--------------------------------|-----------------------|----------------------|
| 33.600 | 6.508 | 0.000 | 6.508 | 61,897.171 | 366,807.199 |
| 33.610 | 6.512 | 0.000 | 6.512 | 61,927.355 | 367,426.454 |
| 33.620 | 6.516 | 0.000 | 6.516 | 61,957.534 | 368,045.774 |
| 33.630 | 6.519 | 0.000 | 6.519 | 61,987.733 | 368,665.633 |
| 33.640 | 6.523 | 0.000 | 6.523 | 62,017.927 | 369,285.557 |
| 33.650 | 6.526 | 0.000 | 6.526 | 62,048.140 | 369,906.020 |
| 33.660 | 6.530 | 0.000 | 6.530 | 62,078.349 | 370,526.548 |
| 33.670 | 6.533 | 0.000 | 6.533 | 62,108.565 | 371,147.379 |
| 33.680 | 6.537 | 0.000 | 6.537 | 62,138.800 | 371,768.748 |
| 33.690 | 6.540 | 0.000 | 6.540 | 62,169.031 | 372,390.183 |
| 33.700 | 6.544 | 0.000 | 6.544 | 62,199.281 | 373,012.157 |
| 33.710 | 6.547 | 0.000 | 6.547 | 62,229.527 | 373,634.197 |
| 33.720 | 6.551 | 0.000 | 6.551 | 62,259.792 | 374,256.777 |
| 33.730 | 6.554 | 0.000 | 6.554 | 62,290.052 | 374,879.421 |
| 33.740 | 6.558 | 0.000 | 6.558 | 62,320.331 | 375,502.606 |
| 33.750 | 6.562 | 0.000 | 6.562 | 62,350.606 | 376,125.856 |
| 33.760 | 6.565 | 0.000 | 6.565 | 62,380.889 | 376,749.409 |
| 33.770 | 6.569 | 0.000 | 6.569 | 62,411.190 | 377,373.503 |
| 33.780 | 6.572 | 0.000 | 6.572 | 62,441.487 | 377,997.661 |
| 33.790 | 6.576 | 0.000 | 6.576 | 62,471.804 | 378,622.361 |
| 33.800 | 6.579 | 0.000 | 6.579 | 62,502.115 | 379,247.126 |
| 33.810 | 6.583 | 0.000 | 6.583 | 62,532.446 | 379,872.432 |
| 33.820 | 6.586 | 0.000 | 6.586 | 62,562.773 | 380,497.803 |
| 33.830 | 6.590 | 0.000 | 6.590 | 62,593.118 | 381,123.717 |
| 33.840 | 6.593 | 0.000 | 6.593 | 62,623.460 | 381,749.694 |
| 33.850 | 6.597 | 0.000 | 6.597 | 62,653.808 | 382,375.976 |
| 33.860 | 6.600 | 0.000 | 6.600 | 62,684.176 | 383,002.799 |
| 33.870 | 6.604 | 0.000 | 6.604 | 62,714.539 | 383,629.688 |
| 33.880 | 6.607 | 0.000 | 6.607 | 62,744.922 | 384,257.119 |
| 33.890 | 6.611 | 0.000 | 6.611 | 62,775.300 | 384,884.615 |
| 33.900 | 6.614 | 0.000 | 6.614 | 62,805.697 | 385,512.654 |
| 33.910 | 6.618 | 0.000 | 6.618 | 62,836.089 | 386,140.757 |
| 33.920 | 6.621 | 0.000 | 6.621 | 62,866.490 | 386,769.165 |
| 33.930 | 6.625 | 0.000 | 6.625 | 62,896.909 | 387,398.116 |
| 33.940 | 6.628 | 0.000 | 6.628 | 62,927.323 | 388,027.131 |
| 33.950 | 6.632 | 0.000 | 6.632 | 62,957.757 | 388,656.691 |
| 33.960 | 6.635 | 0.000 | 6.635 | 62,988.187 | 389,286.315 |
| 33.970 | 6.639 | 0.000 | 6.639 | 63,018.635 | 389,916.484 |
| 33.980 | 6.642 | 0.000 | 6.642 | 63,049.080 | 390,546.717 |
| 33.990 | 6.646 | 0.000 | 6.646 | 63,079.543 | 391,177.495 |

V. 放流特性

| 貯水位高 (m) | オリフィス放流量 (m ³ /sec) | 洪水吐き放流量 (m ³ /sec) | 放流量合計 (m ³ /sec) | 湛水面積(m ²) | 貯留量(m ³) |
|-------------|-----------------------------------|----------------------------------|--------------------------------|-----------------------|----------------------|
| 34.000 | 6.649 | 0.000 | 6.649 | 63,110.002 | 391,808.336 |
| 34.010 | 6.653 | 0.018 | 6.671 | 63,110.000 | 392,439.330 |
| 34.020 | 6.656 | 0.051 | 6.707 | 63,110.000 | 393,070.565 |
| 34.030 | 6.660 | 0.094 | 6.753 | 63,110.000 | 393,701.559 |
| 34.040 | 6.663 | 0.144 | 6.807 | 63,110.000 | 394,332.794 |
| 34.050 | 6.667 | 0.201 | 6.868 | 63,110.000 | 394,963.788 |
| 34.060 | 6.670 | 0.265 | 6.935 | 63,110.000 | 395,595.023 |
| 34.070 | 6.673 | 0.333 | 7.007 | 63,110.000 | 396,226.017 |
| 34.080 | 6.677 | 0.407 | 7.084 | 63,110.000 | 396,857.252 |
| 34.090 | 6.680 | 0.486 | 7.166 | 63,110.000 | 397,488.246 |
| 34.100 | 6.684 | 0.569 | 7.253 | 63,110.000 | 398,119.240 |
| 34.110 | 6.687 | 0.657 | 7.344 | 63,110.000 | 398,750.475 |
| 34.120 | 6.691 | 0.748 | 7.439 | 63,110.000 | 399,381.469 |
| 34.130 | 6.694 | 0.844 | 7.538 | 63,110.000 | 400,012.704 |
| 34.140 | 6.698 | 0.943 | 7.641 | 63,110.000 | 400,643.698 |
| 34.150 | 6.701 | 1.046 | 7.747 | 63,110.000 | 401,274.933 |
| 34.160 | 6.705 | 1.152 | 7.857 | 63,110.000 | 401,905.927 |
| 34.170 | 6.708 | 1.262 | 7.970 | 63,110.000 | 402,536.921 |
| 34.180 | 6.712 | 1.375 | 8.086 | 63,110.000 | 403,168.156 |
| 34.190 | 6.715 | 1.491 | 8.206 | 63,110.000 | 403,799.150 |
| 34.200 | 6.718 | 1.610 | 8.328 | 63,110.000 | 404,430.384 |
| 34.210 | 6.722 | 1.732 | 8.454 | 63,110.000 | 405,061.378 |
| 34.220 | 6.725 | 1.857 | 8.583 | 63,110.000 | 405,692.613 |
| 34.230 | 6.729 | 1.985 | 8.714 | 63,110.000 | 406,323.607 |
| 34.240 | 6.732 | 2.116 | 8.849 | 63,110.000 | 406,954.842 |
| 34.250 | 6.736 | 2.250 | 8.986 | 63,110.000 | 407,585.836 |
| 34.260 | 6.739 | 2.386 | 9.125 | 63,110.000 | 408,216.830 |
| 34.270 | 6.742 | 2.525 | 9.268 | 63,110.000 | 408,848.065 |
| 34.280 | 6.746 | 2.667 | 9.413 | 63,110.000 | 409,479.059 |
| 34.290 | 6.749 | 2.811 | 9.560 | 63,110.000 | 410,110.294 |
| 34.300 | 6.753 | 2.958 | 9.710 | 63,110.001 | 410,741.288 |
| 34.310 | 6.756 | 3.107 | 9.863 | 63,110.001 | 411,372.523 |
| 34.320 | 6.760 | 3.258 | 10.018 | 63,110.001 | 412,003.517 |
| 34.330 | 6.763 | 3.412 | 10.175 | 63,110.001 | 412,634.752 |
| 34.340 | 6.766 | 3.569 | 10.335 | 63,110.001 | 413,265.746 |
| 34.350 | 6.770 | 3.727 | 10.497 | 63,110.001 | 413,896.740 |
| 34.360 | 6.773 | 3.888 | 10.661 | 63,110.001 | 414,527.975 |
| 34.370 | 6.777 | 4.051 | 10.828 | 63,110.001 | 415,158.969 |
| 34.380 | 6.780 | 4.216 | 10.997 | 63,110.001 | 415,790.204 |
| 34.390 | 6.784 | 4.384 | 11.168 | 63,110.001 | 416,421.198 |

V. 放流特性

| 貯水位高 (m) | オリフィス放流量 (m ³ /sec) | 洪水吐き放流量 (m ³ /sec) | 放流量合計 (m ³ /sec) | 湛水面積(m ²) | 貯留量(m ³) |
|-------------|-----------------------------------|----------------------------------|--------------------------------|-----------------------|----------------------|
| 34.400 | 6.787 | 4.554 | 11.341 | 63,110.001 | 417,052.433 |
| 34.410 | 6.790 | 4.726 | 11.516 | 63,110.001 | 417,683.427 |
| 34.420 | 6.794 | 4.899 | 11.693 | 63,110.001 | 418,314.421 |
| 34.430 | 6.797 | 5.075 | 11.873 | 63,110.001 | 418,945.655 |
| 34.440 | 6.801 | 5.254 | 12.054 | 63,110.001 | 419,576.650 |
| 34.450 | 6.804 | 5.434 | 12.238 | 63,110.001 | 420,207.884 |
| 34.460 | 6.807 | 5.616 | 12.423 | 63,110.001 | 420,838.878 |
| 34.470 | 6.811 | 5.800 | 12.611 | 63,110.001 | 421,470.113 |
| 34.480 | 6.814 | 5.986 | 12.800 | 63,110.001 | 422,101.107 |
| 34.490 | 6.818 | 6.174 | 12.992 | 63,110.001 | 422,732.342 |
| 34.500 | 6.821 | 6.364 | 13.185 | 63,110.001 | 423,363.336 |
| 34.510 | 6.824 | 6.556 | 13.380 | 63,110.001 | 423,994.330 |
| 34.520 | 6.828 | 6.750 | 13.577 | 63,110.001 | 424,625.565 |
| 34.530 | 6.831 | 6.945 | 13.776 | 63,110.001 | 425,256.559 |
| 34.540 | 6.835 | 7.143 | 13.977 | 63,110.001 | 425,887.794 |
| 34.550 | 6.838 | 7.342 | 14.180 | 63,110.001 | 426,518.788 |
| 34.560 | 6.841 | 7.543 | 14.385 | 63,110.001 | 427,150.023 |
| 34.570 | 6.845 | 7.746 | 14.591 | 63,110.001 | 427,781.017 |
| 34.580 | 6.848 | 7.951 | 14.799 | 63,110.001 | 428,412.252 |
| 34.590 | 6.851 | 8.157 | 15.009 | 63,110.001 | 429,043.246 |
| 34.600 | 6.855 | 8.366 | 15.220 | 63,110.001 | 429,674.240 |
| 34.610 | 6.858 | 8.576 | 15.434 | 63,110.001 | 430,305.475 |
| 34.620 | 6.862 | 8.787 | 15.649 | 63,110.001 | 430,936.469 |
| 34.630 | 6.865 | 9.001 | 15.866 | 63,110.001 | 431,567.704 |
| 34.640 | 6.868 | 9.216 | 16.084 | 63,110.001 | 432,198.698 |
| 34.650 | 6.872 | 9.433 | 16.305 | 63,110.001 | 432,829.933 |
| 34.660 | 6.875 | 9.651 | 16.526 | 63,110.001 | 433,460.927 |
| 34.670 | 6.878 | 9.871 | 16.750 | 63,110.001 | 434,091.921 |
| 34.680 | 6.882 | 10.093 | 16.975 | 63,110.001 | 434,723.155 |
| 34.690 | 6.885 | 10.317 | 17.202 | 63,110.001 | 435,354.150 |
| 34.700 | 6.889 | 10.542 | 17.430 | 63,110.001 | 435,985.384 |
| 34.710 | 6.892 | 10.769 | 17.660 | 63,110.001 | 436,616.378 |
| 34.720 | 6.895 | 10.997 | 17.892 | 63,110.001 | 437,247.613 |
| 34.730 | 6.899 | 11.227 | 18.125 | 63,110.001 | 437,878.607 |
| 34.740 | 6.902 | 11.458 | 18.360 | 63,110.001 | 438,509.842 |
| 34.750 | 6.905 | 11.691 | 18.597 | 63,110.001 | 439,140.836 |
| 34.760 | 6.909 | 11.926 | 18.835 | 63,110.001 | 439,771.830 |
| 34.770 | 6.912 | 12.162 | 19.074 | 63,110.001 | 440,403.065 |
| 34.780 | 6.915 | 12.400 | 19.315 | 63,110.001 | 441,034.059 |
| 34.790 | 6.919 | 12.639 | 19.558 | 63,110.001 | 441,665.294 |

V. 放流特性

| 貯水位高 (m) | オリフィス放流量 (m ³ /sec) | 洪水吐き放流量 (m ³ /sec) | 放流量合計 (m ³ /sec) | 湛水面積(m ²) | 貯留量(m ³) |
|-------------|-----------------------------------|----------------------------------|--------------------------------|-----------------------|----------------------|
| 34.800 | 6.922 | 12.880 | 19.802 | 63,110.001 | 442,296.288 |
| 34.810 | 6.925 | 13.122 | 20.047 | 63,110.001 | 442,927.523 |
| 34.820 | 6.929 | 13.366 | 20.294 | 63,110.001 | 443,558.517 |
| 34.830 | 6.932 | 13.611 | 20.543 | 63,110.001 | 444,189.752 |
| 34.840 | 6.935 | 13.858 | 20.793 | 63,110.001 | 444,820.746 |
| 34.850 | 6.939 | 14.106 | 21.045 | 63,110.001 | 445,451.740 |
| 34.860 | 6.942 | 14.356 | 21.298 | 63,110.001 | 446,082.975 |
| 34.870 | 6.945 | 14.607 | 21.552 | 63,110.001 | 446,713.969 |
| 34.880 | 6.949 | 14.859 | 21.808 | 63,110.001 | 447,345.204 |
| 34.890 | 6.952 | 15.113 | 22.065 | 63,110.002 | 447,976.198 |
| 34.900 | 6.955 | 15.369 | 22.324 | 63,110.002 | 448,607.433 |
| 34.910 | 6.959 | 15.626 | 22.584 | 63,110.002 | 449,238.427 |
| 34.920 | 6.962 | 15.884 | 22.846 | 63,110.002 | 449,869.421 |
| 34.930 | 6.965 | 16.143 | 23.109 | 63,110.002 | 450,500.656 |
| 34.940 | 6.969 | 16.405 | 23.373 | 63,110.002 | 451,131.650 |
| 34.950 | 6.972 | 16.667 | 23.639 | 63,110.002 | 451,762.885 |
| 34.960 | 6.975 | 16.931 | 23.906 | 63,110.002 | 452,393.879 |
| 34.970 | 6.979 | 17.196 | 24.175 | 63,110.002 | 453,025.113 |
| 34.980 | 6.982 | 17.463 | 24.445 | 63,110.002 | 453,656.107 |
| 34.990 | 6.985 | 17.731 | 24.716 | 63,110.002 | 454,287.342 |
| 35.000 | 6.989 | 18.000 | 24.989 | 63,110.002 | 454,918.336 |

VI. 貯留解析

| 降雨時間 | 降雨時刻 | 流入量 (m ³) | オリフィス放流量 (m ³ /sec) | 洪水吐き 放流量 (m ³ /sec) | 放流量合計 (m ³ /sec) | 貯水位 (m) | 湛水面積 (m ²) | 貯留量 (m ³) |
|------|-------|--------------------------|-----------------------------------|--------------------------------------|--------------------------------|---------|------------------------|-----------------------|
| 0 | 0:00 | 0.000 | 0.000 | 0.000 | 0.000 | 24.000 | 79.000 | 0.000 |
| 20 | 0:20 | 1.767 | 1.634 | 0.000 | 1.634 | 25.006 | 79.000 | 79.471 |
| 40 | 0:40 | 1.787 | 1.898 | 0.000 | 1.898 | 25.165 | 79.000 | 92.067 |
| 60 | 1:00 | 1.808 | 1.713 | 0.000 | 1.713 | 25.037 | 79.000 | 81.930 |
| 80 | 1:20 | 1.829 | 1.906 | 0.000 | 1.906 | 25.173 | 79.000 | 92.667 |
| 100 | 1:40 | 1.851 | 1.788 | 0.000 | 1.788 | 25.069 | 79.000 | 84.442 |
| 120 | 2:00 | 1.873 | 1.920 | 0.000 | 1.920 | 25.189 | 79.000 | 93.903 |
| 140 | 2:20 | 1.896 | 1.858 | 0.000 | 1.858 | 25.122 | 79.000 | 88.600 |
| 160 | 2:40 | 1.920 | 1.946 | 0.000 | 1.946 | 25.216 | 79.000 | 96.076 |
| 180 | 3:00 | 1.945 | 1.922 | 0.000 | 1.922 | 25.190 | 79.000 | 94.034 |
| 200 | 3:20 | 1.970 | 1.984 | 0.000 | 1.984 | 25.256 | 79.000 | 99.220 |
| 220 | 3:40 | 1.996 | 1.982 | 0.000 | 1.982 | 25.253 | 79.000 | 99.012 |
| 240 | 4:00 | 2.022 | 2.029 | 0.000 | 2.029 | 25.304 | 79.000 | 103.050 |
| 260 | 4:20 | 2.050 | 2.042 | 0.000 | 2.042 | 25.318 | 79.000 | 104.102 |
| 280 | 4:40 | 2.078 | 2.081 | 0.000 | 2.081 | 25.360 | 79.000 | 107.444 |
| 300 | 5:00 | 2.108 | 2.102 | 0.000 | 2.102 | 25.381 | 79.000 | 109.120 |
| 320 | 5:20 | 2.138 | 2.139 | 0.000 | 2.139 | 25.421 | 79.000 | 112.243 |
| 340 | 5:40 | 2.169 | 2.165 | 0.000 | 2.165 | 25.449 | 79.000 | 114.464 |
| 360 | 6:00 | 2.202 | 2.201 | 0.000 | 2.201 | 25.486 | 79.000 | 117.426 |
| 380 | 6:20 | 2.235 | 2.232 | 0.000 | 2.232 | 25.519 | 79.000 | 119.989 |
| 400 | 6:40 | 2.270 | 2.268 | 0.000 | 2.268 | 25.558 | 79.000 | 123.090 |
| 420 | 7:00 | 2.306 | 2.303 | 0.000 | 2.303 | 25.594 | 79.000 | 125.933 |
| 440 | 7:20 | 2.343 | 2.341 | 0.000 | 2.341 | 25.634 | 79.000 | 129.086 |
| 460 | 7:40 | 2.382 | 2.379 | 0.000 | 2.379 | 25.673 | 79.000 | 132.175 |
| 480 | 8:00 | 2.422 | 2.419 | 0.000 | 2.419 | 25.715 | 79.000 | 135.488 |
| 500 | 8:20 | 2.463 | 2.460 | 0.000 | 2.460 | 25.758 | 79.000 | 138.865 |
| 520 | 8:40 | 2.507 | 2.504 | 0.000 | 2.504 | 25.805 | 79.000 | 142.568 |
| 540 | 9:00 | 2.552 | 2.548 | 0.000 | 2.548 | 25.853 | 79.000 | 146.420 |
| 560 | 9:20 | 2.599 | 2.595 | 0.000 | 2.595 | 25.905 | 79.000 | 150.532 |
| 580 | 9:40 | 2.648 | 2.644 | 0.000 | 2.644 | 25.961 | 79.000 | 154.903 |
| 600 | 10:00 | 2.699 | 2.679 | 0.000 | 2.679 | 26.001 | 18,701.246 | 168.792 |
| 620 | 10:20 | 2.752 | 2.681 | 0.000 | 2.681 | 26.003 | 18,707.502 | 223.040 |
| 640 | 10:40 | 2.808 | 2.687 | 0.000 | 2.687 | 26.010 | 18,720.792 | 338.256 |
| 660 | 11:00 | 2.866 | 2.695 | 0.000 | 2.695 | 26.019 | 18,741.017 | 513.677 |
| 680 | 11:20 | 2.927 | 2.705 | 0.000 | 2.705 | 26.032 | 18,768.219 | 749.754 |
| 700 | 11:40 | 2.992 | 2.719 | 0.000 | 2.719 | 26.047 | 18,802.407 | 1,046.725 |
| 720 | 12:00 | 3.059 | 2.736 | 0.000 | 2.736 | 26.066 | 18,843.570 | 1,404.626 |
| 740 | 12:20 | 3.130 | 2.754 | 0.000 | 2.754 | 26.089 | 18,891.785 | 1,824.361 |
| 760 | 12:40 | 3.205 | 2.775 | 0.000 | 2.775 | 26.114 | 18,947.240 | 2,307.743 |
| 780 | 13:00 | 3.284 | 2.799 | 0.000 | 2.799 | 26.143 | 19,010.087 | 2,856.474 |
| 800 | 13:20 | 3.367 | 2.826 | 0.000 | 2.826 | 26.175 | 19,080.484 | 3,472.135 |

VI. 貯留解析

| 降雨時間 | 降雨時刻 | 流入量 (m ³) | オリフィス放流量 (m ³ /sec) | 洪水吐き 放流量 (m ³ /sec) | 放流量合計 (m ³ /sec) | 貯水位 (m) | 湛水面積 (m ²) | 貯留量 (m ³) |
|------|-------|--------------------------|-----------------------------------|--------------------------------------|--------------------------------|---------|------------------------|-----------------------|
| 820 | 13:40 | 3.456 | 2.855 | 0.000 | 2.855 | 26.211 | 19,158.670 | 4,157.305 |
| 840 | 14:00 | 3.549 | 2.887 | 0.000 | 2.887 | 26.251 | 19,244.965 | 4,915.129 |
| 860 | 14:20 | 3.649 | 2.922 | 0.000 | 2.922 | 26.294 | 19,339.677 | 5,748.832 |
| 880 | 14:40 | 3.755 | 2.959 | 0.000 | 2.959 | 26.341 | 19,443.236 | 6,662.786 |
| 900 | 15:00 | 3.868 | 2.998 | 0.000 | 2.998 | 26.392 | 19,556.154 | 7,662.078 |
| 920 | 15:20 | 3.989 | 3.041 | 0.000 | 3.041 | 26.448 | 19,679.010 | 8,752.620 |
| 940 | 15:40 | 4.119 | 3.087 | 0.000 | 3.087 | 26.508 | 19,812.430 | 9,940.779 |
| 960 | 16:00 | 4.258 | 3.135 | 0.000 | 3.135 | 26.573 | 19,957.140 | 11,233.990 |
| 980 | 16:20 | 4.409 | 3.186 | 0.000 | 3.186 | 26.643 | 20,114.033 | 12,641.410 |
| 1000 | 16:40 | 4.572 | 3.241 | 0.000 | 3.241 | 26.719 | 20,284.139 | 14,173.585 |
| 1020 | 17:00 | 4.749 | 3.299 | 0.000 | 3.299 | 26.801 | 20,468.601 | 15,842.309 |
| 1040 | 17:20 | 4.941 | 3.360 | 0.000 | 3.360 | 26.890 | 20,668.683 | 17,660.900 |
| 1060 | 17:40 | 5.152 | 3.425 | 0.000 | 3.425 | 26.985 | 20,885.934 | 19,645.498 |
| 1080 | 18:00 | 5.384 | 3.467 | 0.000 | 3.467 | 27.047 | 42,094.068 | 21,831.460 |
| 1100 | 18:20 | 5.640 | 3.505 | 0.000 | 3.505 | 27.105 | 42,363.597 | 24,262.148 |
| 1120 | 18:40 | 5.924 | 3.547 | 0.000 | 3.547 | 27.169 | 42,662.780 | 26,969.310 |
| 1140 | 19:00 | 6.242 | 3.593 | 0.000 | 3.593 | 27.239 | 42,994.867 | 29,985.369 |
| 1160 | 19:20 | 6.600 | 3.642 | 0.000 | 3.642 | 27.317 | 43,363.785 | 33,349.651 |
| 1180 | 19:40 | 7.006 | 3.697 | 0.000 | 3.697 | 27.403 | 43,774.243 | 37,109.522 |
| 1200 | 20:00 | 7.471 | 3.756 | 0.000 | 3.756 | 27.499 | 44,231.962 | 41,323.199 |
| 1220 | 20:20 | 8.008 | 3.822 | 0.000 | 3.822 | 27.605 | 44,744.044 | 46,063.181 |
| 1240 | 20:40 | 8.636 | 3.893 | 0.000 | 3.893 | 27.724 | 45,319.332 | 51,420.679 |
| 1260 | 21:00 | 9.382 | 3.972 | 0.000 | 3.972 | 27.858 | 45,969.088 | 57,512.719 |
| 1280 | 21:20 | 10.282 | 4.058 | 0.000 | 4.058 | 28.009 | 46,685.829 | 64,492.842 |
| 1300 | 21:40 | 11.390 | 4.156 | 0.000 | 4.156 | 28.181 | 47,087.187 | 72,567.566 |
| 1320 | 22:00 | 12.790 | 4.265 | 0.000 | 4.265 | 28.381 | 47,555.028 | 82,023.348 |
| 1340 | 22:20 | 14.617 | 4.391 | 0.000 | 4.391 | 28.616 | 48,108.706 | 93,274.082 |
| 1360 | 22:40 | 17.106 | 4.538 | 0.000 | 4.538 | 28.898 | 48,777.510 | 106,950.904 |
| 1380 | 23:00 | 20.707 | 4.712 | 0.000 | 4.712 | 29.246 | 49,661.568 | 124,089.092 |
| 1400 | 23:20 | 26.413 | 4.927 | 0.000 | 4.927 | 29.694 | 50,837.710 | 146,577.789 |
| 1420 | 23:40 | 37.009 | 5.209 | 0.000 | 5.209 | 30.313 | 52,575.462 | 178,549.476 |
| 1440 | 24:00 | 67.009 | 5.650 | 0.000 | 5.650 | 31.346 | 55,602.913 | 234,444.969 |
| 1460 | 24:20 | 0.000 | 5.886 | 0.000 | 5.886 | 31.935 | 57,266.081 | 267,728.652 |
| 1480 | 24:40 | 0.000 | 5.838 | 0.000 | 5.838 | 31.812 | 56,916.592 | 260,693.987 |
| 1500 | 25:00 | 0.000 | 5.789 | 0.000 | 5.789 | 31.689 | 56,568.927 | 253,717.469 |
| 1520 | 25:20 | 0.000 | 5.740 | 0.000 | 5.740 | 31.566 | 56,223.143 | 246,799.768 |
| 1540 | 25:40 | 0.000 | 5.690 | 0.000 | 5.690 | 31.444 | 55,879.276 | 239,941.496 |
| 1560 | 26:00 | 0.000 | 5.640 | 0.000 | 5.640 | 31.322 | 55,537.349 | 233,143.024 |
| 1580 | 26:20 | 0.000 | 5.591 | 0.000 | 5.591 | 31.200 | 55,197.408 | 226,404.483 |
| 1600 | 26:40 | 0.000 | 5.540 | 0.000 | 5.540 | 31.079 | 54,859.464 | 219,726.249 |
| 1620 | 27:00 | 0.000 | 5.489 | 0.000 | 5.489 | 30.958 | 54,512.760 | 213,108.702 |

VI. 貯留解析

| 降雨時間 | 降雨時刻 | 流入量 (m ³) | オリフィス放流量 (m ³ /sec) | 洪水吐き 放流量 (m ³ /sec) | 放流量合計 (m ³ /sec) | 貯水位 (m) | 湛水面積 (m ²) | 貯留量 (m ³) |
|------|-------|--------------------------|-----------------------------------|--------------------------------------|--------------------------------|---------|------------------------|-----------------------|
| 1640 | 27:20 | 0.000 | 5.438 | 0.000 | 5.438 | 30.837 | 54,147.896 | 206,552.225 |
| 1660 | 27:40 | 0.000 | 5.386 | 0.000 | 5.386 | 30.717 | 53,785.244 | 200,057.471 |
| 1680 | 28:00 | 0.000 | 5.335 | 0.000 | 5.335 | 30.597 | 53,424.863 | 193,624.865 |
| 1700 | 28:20 | 0.000 | 5.283 | 0.000 | 5.283 | 30.477 | 53,066.765 | 187,254.573 |
| 1720 | 28:40 | 0.000 | 5.230 | 0.000 | 5.230 | 30.358 | 52,710.995 | 180,947.024 |
| 1740 | 29:00 | 0.000 | 5.177 | 0.000 | 5.177 | 30.239 | 52,357.611 | 174,702.651 |
| 1760 | 29:20 | 0.000 | 5.124 | 0.000 | 5.124 | 30.121 | 52,006.646 | 168,521.892 |
| 1780 | 29:40 | 0.000 | 5.070 | 0.000 | 5.070 | 30.003 | 51,658.165 | 162,405.460 |
| 1800 | 30:00 | 0.000 | 5.016 | 0.000 | 5.016 | 29.885 | 51,344.735 | 156,353.522 |
| 1820 | 30:20 | 0.000 | 4.962 | 0.000 | 4.962 | 29.768 | 51,034.498 | 150,366.237 |
| 1840 | 30:40 | 0.000 | 4.908 | 0.000 | 4.908 | 29.652 | 50,726.721 | 144,444.301 |
| 1860 | 31:00 | 0.000 | 4.853 | 0.000 | 4.853 | 29.536 | 50,421.432 | 138,588.118 |
| 1880 | 31:20 | 0.000 | 4.797 | 0.000 | 4.797 | 29.421 | 50,118.677 | 132,798.103 |
| 1900 | 31:40 | 0.000 | 4.742 | 0.000 | 4.742 | 29.306 | 49,818.510 | 127,074.666 |
| 1920 | 32:00 | 0.000 | 4.686 | 0.000 | 4.686 | 29.193 | 49,520.946 | 121,417.929 |
| 1940 | 32:20 | 0.000 | 4.629 | 0.000 | 4.629 | 29.079 | 49,226.050 | 115,828.602 |
| 1960 | 32:40 | 0.000 | 4.573 | 0.000 | 4.573 | 28.967 | 48,940.930 | 110,307.102 |
| 1980 | 33:00 | 0.000 | 4.516 | 0.000 | 4.516 | 28.855 | 48,675.244 | 104,853.543 |
| 2000 | 33:20 | 0.000 | 4.459 | 0.000 | 4.459 | 28.744 | 48,412.177 | 99,468.328 |
| 2020 | 33:40 | 0.000 | 4.401 | 0.000 | 4.401 | 28.634 | 48,151.779 | 94,152.160 |
| 2040 | 34:00 | 0.000 | 4.343 | 0.000 | 4.343 | 28.525 | 47,894.095 | 88,905.430 |
| 2060 | 34:20 | 0.000 | 4.285 | 0.000 | 4.285 | 28.416 | 47,639.137 | 83,728.204 |
| 2080 | 34:40 | 0.000 | 4.227 | 0.000 | 4.227 | 28.309 | 47,386.951 | 78,620.866 |
| 2100 | 35:00 | 0.000 | 4.168 | 0.000 | 4.168 | 28.202 | 47,137.582 | 73,583.807 |
| 2120 | 35:20 | 0.000 | 4.109 | 0.000 | 4.109 | 28.097 | 46,891.058 | 68,617.410 |
| 2140 | 35:40 | 0.000 | 4.050 | 0.000 | 4.050 | 27.992 | 46,626.669 | 63,722.061 |
| 2160 | 36:00 | 0.000 | 3.989 | 0.000 | 3.989 | 27.888 | 46,116.251 | 58,898.503 |
| 2180 | 36:20 | 0.000 | 3.929 | 0.000 | 3.929 | 27.784 | 45,610.712 | 54,147.248 |
| 2200 | 36:40 | 0.000 | 3.868 | 0.000 | 3.868 | 27.681 | 45,110.183 | 49,469.035 |
| 2220 | 37:00 | 0.000 | 3.806 | 0.000 | 3.806 | 27.579 | 44,614.840 | 44,864.696 |
| 2240 | 37:20 | 0.000 | 3.743 | 0.000 | 3.743 | 27.477 | 44,124.843 | 40,335.090 |
| 2260 | 37:40 | 0.000 | 3.680 | 0.000 | 3.680 | 27.375 | 43,640.347 | 35,881.071 |
| 2280 | 38:00 | 0.000 | 3.616 | 0.000 | 3.616 | 27.274 | 43,161.497 | 31,503.134 |
| 2300 | 38:20 | 0.000 | 3.551 | 0.000 | 3.551 | 27.174 | 42,688.503 | 27,202.546 |
| 2320 | 38:40 | 0.000 | 3.486 | 0.000 | 3.486 | 27.075 | 42,221.553 | 22,980.201 |
| 2340 | 39:00 | 0.000 | 3.400 | 0.000 | 3.400 | 26.947 | 20,798.817 | 18,848.417 |
| 2360 | 39:20 | 0.000 | 3.265 | 0.000 | 3.265 | 26.752 | 20,358.919 | 14,849.177 |
| 2380 | 39:40 | 0.000 | 3.127 | 0.000 | 3.127 | 26.562 | 19,932.535 | 11,013.781 |
| 2400 | 40:00 | 0.000 | 2.987 | 0.000 | 2.987 | 26.376 | 19,520.396 | 7,345.316 |
| 2420 | 40:20 | 0.000 | 2.842 | 0.000 | 2.842 | 26.195 | 19,123.369 | 3,847.783 |
| 2440 | 40:40 | 0.000 | 2.696 | 0.000 | 2.696 | 26.020 | 18,742.294 | 524.736 |

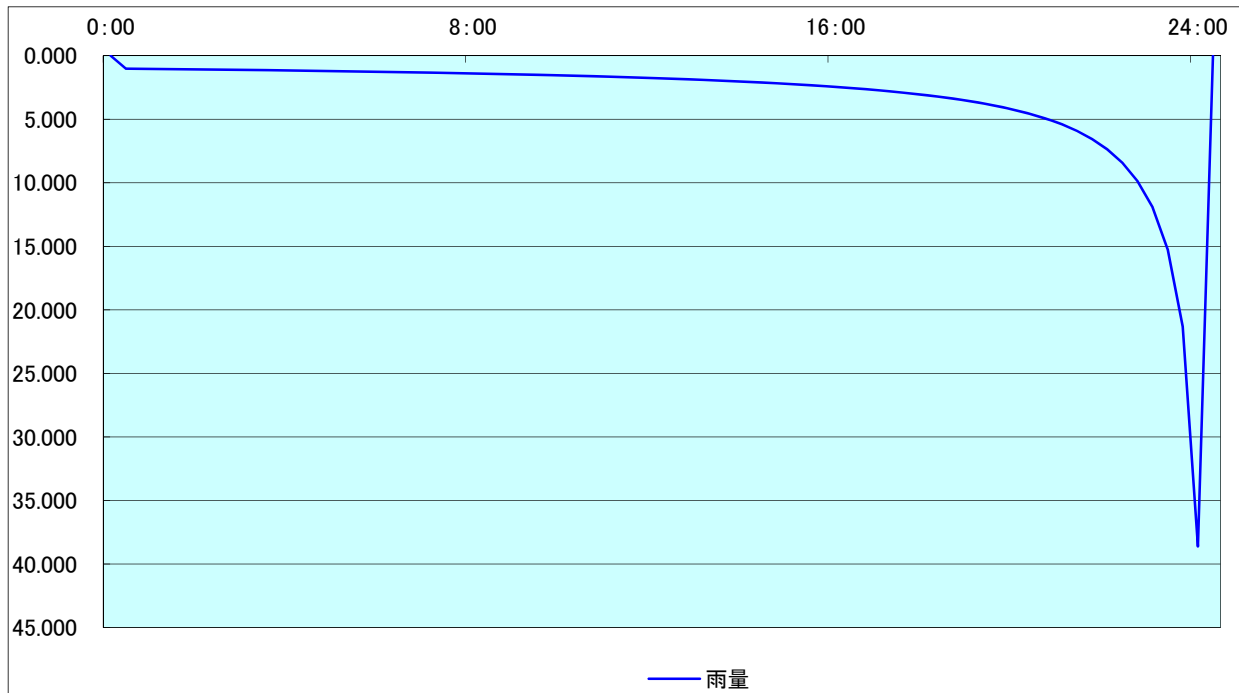
VI. 貯留解析

| 降雨時間 | 降雨時刻 | 流入量 (m^3) | オリフィス放流量 (m^3/sec) | 洪水吐き 放流量 (m^3/sec) | 放流量合計 (m^3/sec) | 貯水位 (m) | 湛水面積 (m^2) | 貯留量 (m^3) |
|------|-------|-------------------------|---|--|--------------------------------------|---------|-----------------------|----------------------|
| 2460 | 41:00 | 0.000 | 0.000 | 0.000 | 0.000 | 24.000 | 79.000 | 0.000 |
| 2480 | 41:20 | 0.000 | 0.000 | 0.000 | 0.000 | 24.000 | 79.000 | 0.000 |
| 2500 | 41:40 | 0.000 | 0.000 | 0.000 | 0.000 | 24.000 | 79.000 | 0.000 |
| 2520 | 42:00 | 0.000 | 0.000 | 0.000 | 0.000 | 24.000 | 79.000 | 0.000 |
| 2540 | 42:20 | 0.000 | 0.000 | 0.000 | 0.000 | 24.000 | 79.000 | 0.000 |
| 2560 | 42:40 | 0.000 | 0.000 | 0.000 | 0.000 | 24.000 | 79.000 | 0.000 |
| 2580 | 43:00 | 0.000 | 0.000 | 0.000 | 0.000 | 24.000 | 79.000 | 0.000 |
| 2600 | 43:20 | 0.000 | 0.000 | 0.000 | 0.000 | 24.000 | 79.000 | 0.000 |
| 2620 | 43:40 | 0.000 | 0.000 | 0.000 | 0.000 | 24.000 | 79.000 | 0.000 |
| 2640 | 44:00 | 0.000 | 0.000 | 0.000 | 0.000 | 24.000 | 79.000 | 0.000 |
| 2660 | 44:20 | 0.000 | 0.000 | 0.000 | 0.000 | 24.000 | 79.000 | 0.000 |
| 2680 | 44:40 | 0.000 | 0.000 | 0.000 | 0.000 | 24.000 | 79.000 | 0.000 |
| 2700 | 45:00 | 0.000 | 0.000 | 0.000 | 0.000 | 24.000 | 79.000 | 0.000 |
| 2720 | 45:20 | 0.000 | 0.000 | 0.000 | 0.000 | 24.000 | 79.000 | 0.000 |
| 2740 | 45:40 | 0.000 | 0.000 | 0.000 | 0.000 | 24.000 | 79.000 | 0.000 |
| 2760 | 46:00 | 0.000 | 0.000 | 0.000 | 0.000 | 24.000 | 79.000 | 0.000 |
| 2780 | 46:20 | 0.000 | 0.000 | 0.000 | 0.000 | 24.000 | 79.000 | 0.000 |
| 2800 | 46:40 | 0.000 | 0.000 | 0.000 | 0.000 | 24.000 | 79.000 | 0.000 |
| 2820 | 47:00 | 0.000 | 0.000 | 0.000 | 0.000 | 24.000 | 79.000 | 0.000 |
| 2840 | 47:20 | 0.000 | 0.000 | 0.000 | 0.000 | 24.000 | 79.000 | 0.000 |
| 2860 | 47:40 | 0.000 | 0.000 | 0.000 | 0.000 | 24.000 | 79.000 | 0.000 |
| 2880 | 48:00 | 0.000 | 0.000 | 0.000 | 0.000 | 24.000 | 79.000 | 0.000 |
| 2900 | 48:20 | 0.000 | 0.000 | 0.000 | 0.000 | 24.000 | 79.000 | 0.000 |
| 2920 | 48:40 | 0.000 | 0.000 | 0.000 | 0.000 | 24.000 | 79.000 | 0.000 |
| 2940 | 49:00 | 0.000 | 0.000 | 0.000 | 0.000 | 24.000 | 79.000 | 0.000 |
| 2960 | 49:20 | 0.000 | 0.000 | 0.000 | 0.000 | 24.000 | 79.000 | 0.000 |
| 2980 | 49:40 | 0.000 | 0.000 | 0.000 | 0.000 | 24.000 | 79.000 | 0.000 |
| 3000 | 50:00 | 0.000 | 0.000 | 0.000 | 0.000 | 24.000 | 79.000 | 0.000 |
| 3020 | 50:20 | 0.000 | 0.000 | 0.000 | 0.000 | 24.000 | 79.000 | 0.000 |

VII. グラフ

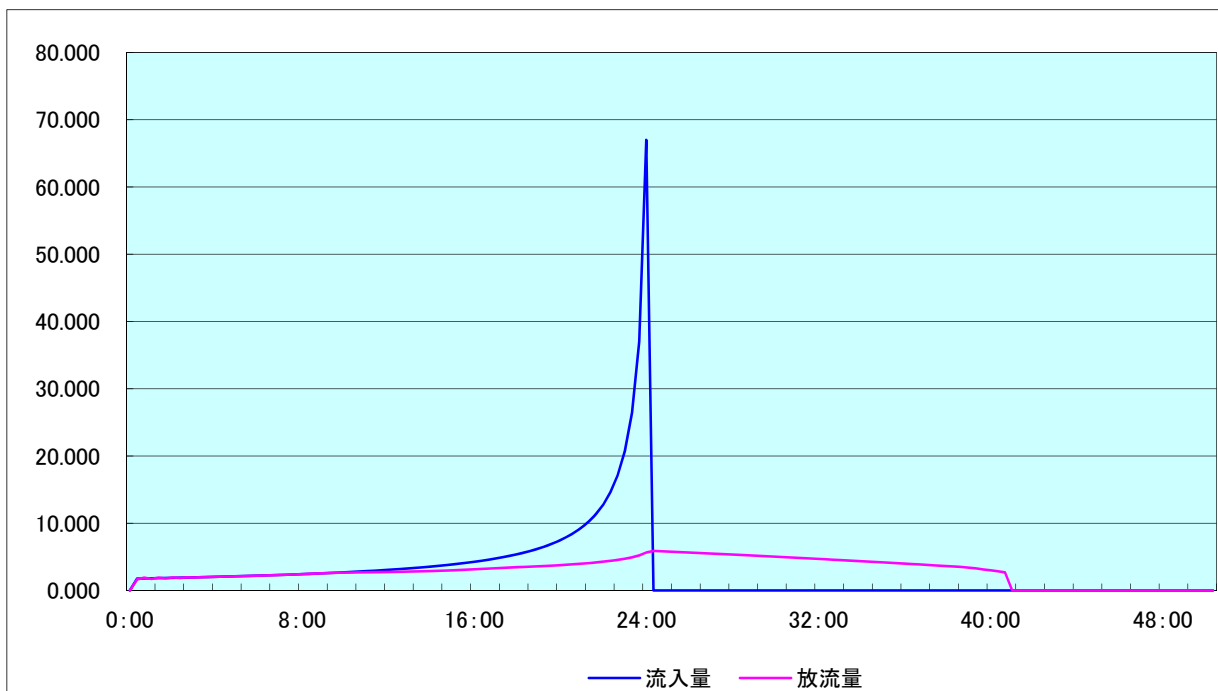
降 雨 波 形

縦軸: 降雨量(mm/hr), 横軸: 降雨時間



流入量と放流量

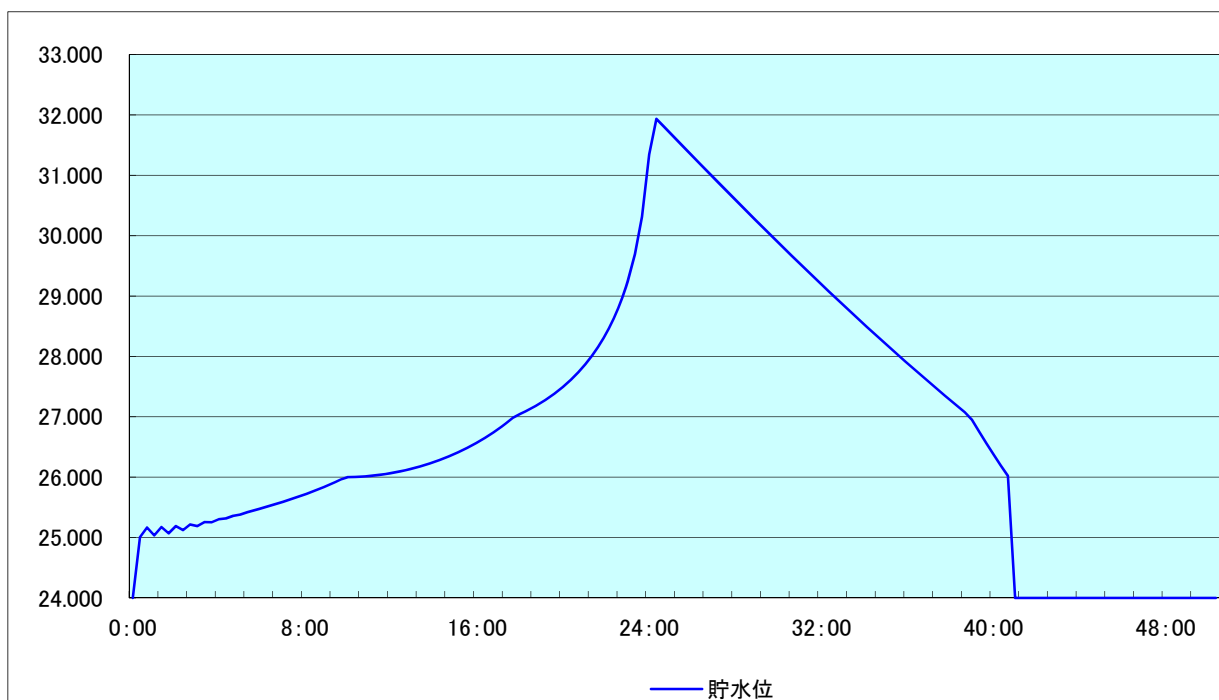
縦軸: 流入量or放流量(m^3/sec), 横軸: 計算時間



VII. グラフ

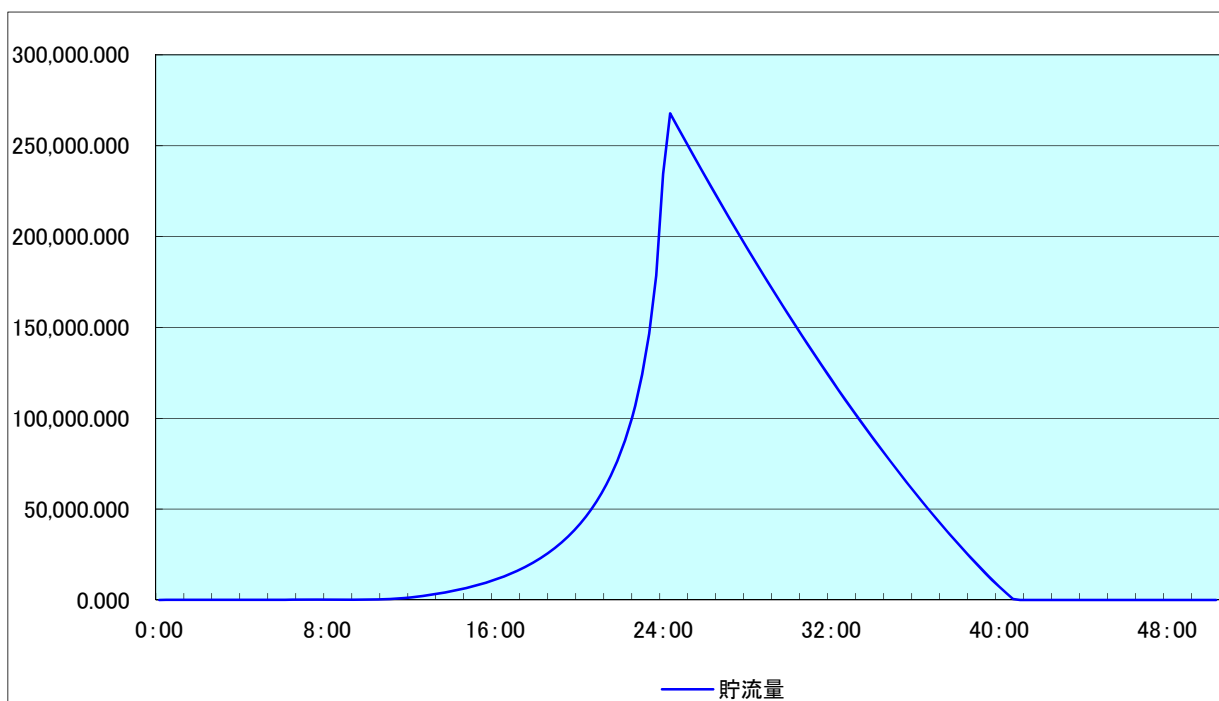
貯 水 位

縦軸:貯水位(m), 横軸:計算時間



貯 留 量

縦軸:貯留量(m^3), 横軸:計算時間



VIII. 参考資料

1. 参考図書

『防災調節池等技術基準(案) 解説と設計事例』 社団法人 日本河川協会
『流域貯留施設等技術指針(案)』 社団法人 雨水貯留浸透技術協会

2. 降雨強度式

君島式
$$R = \frac{a}{t^n + b}$$

ここに、
R: 降雨強度(mm/hr)
t: 降雨継続期間(分)
n: 定数
a: "
b: "

3. ピーク流出量計算式

合理式
$$Q_p = \frac{1}{360} \cdot f \cdot r \cdot A$$

ここに、
 Q_p : ピーク流出量(m^3/sec)
f: 開発後の流出係数
r: 洪水到達時間内の平均降雨強度(mm/hr)
A: 集水面積(ha)

4. 洪水調節容量の算定式

連続式
$$I - O = \frac{dV}{dt}$$

ここに、
I: 調整池への流入量(m^3/sec)
O: 下流への放流量(m^3/sec)
V: 貯留量(m^3)

より、
$$V(t + \Delta t) - V(t) = \frac{I(t + \Delta t) + I(t)}{2} \Delta t - \frac{O(t + \Delta t) + O(t)}{2} \Delta t$$

Δt : 計算時間ピッチ(sec)
t, t + Δt : 計算時刻を示す添え字

5. オリフィスからのほう流量

VIII. 参考資料

1) $H \leq 1.2D$ の時

$$Q_0 = C_2 \cdot B \cdot H^{3/2} \cdots \cdots \text{但し、流量係数 } C_2 \text{ の値は } 1.8$$

2) $1.2D < H < 1.8D$ の時

この間については、 $H = 1.2D$ での Q_0 と

$H = 1.8D$ での Q_0 を用いて直線近似値とする。

3) $1.8D \leq H$ の時

$$Q_0 = C_1 \cdot B \cdot D \cdot \sqrt{(2g(H - D/2))}$$

ここに、 Q_0 :オリフィスからの放流量(m^3/sec)

H :水深(m)

B :オリフィス幅(m)

D :オリフィス高(m)

C_1 :流量係数、0.6~0.8(ベルマウス付は0.85~0.95)

C_2 :流量係数、1.8

g :重力加速度 9.8m/s^2

6. 洪水吐きのほう流量

$$Q = C \cdot B \cdot H^{3/2}$$

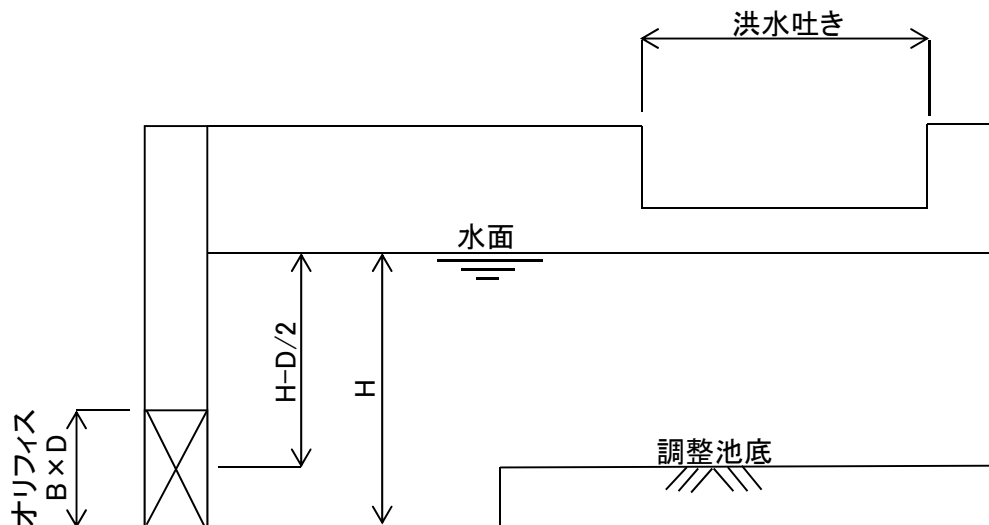
ここに、 Q :洪水吐きからの放流量(m^3/sec)

H :越流頂を基準面とした接近流速を含む全水頭(m)

B :越流幅(m)

C :流量係数($C \leq 1.8$ 、一般に1.8程度を使用)

7. 調整池概略図



8. 調整池容量の算定式

VIII. 参考資料

調整池容量 $V=(\text{底版面積}+\text{上面面積}+\sqrt{(\text{底版面積}\times\text{上面面積})})\times\text{高さ}\div 3$

