

# **DCMini**

**Version 1.0**

**Install documentation**

**QUIZ LAB LLC. 2025**

**2025/03/06**

**Document Version 1.0**

## 1. Installation method

Extract the DCMini\_1.0.1.4.zip file to a location of your choice.

Please disable any blocks in the OS that are not recognized by Windows or that may cause harm before running the program. Since this software is not registered in the MS-Store, you may receive the following message. This software is intended to support development and does not contain any malicious code. However, please be sure to use genuine products obtained from our website or the Vector website. (As of March 7, 2025, our website is under construction.)

<https://vector.co.jp/>



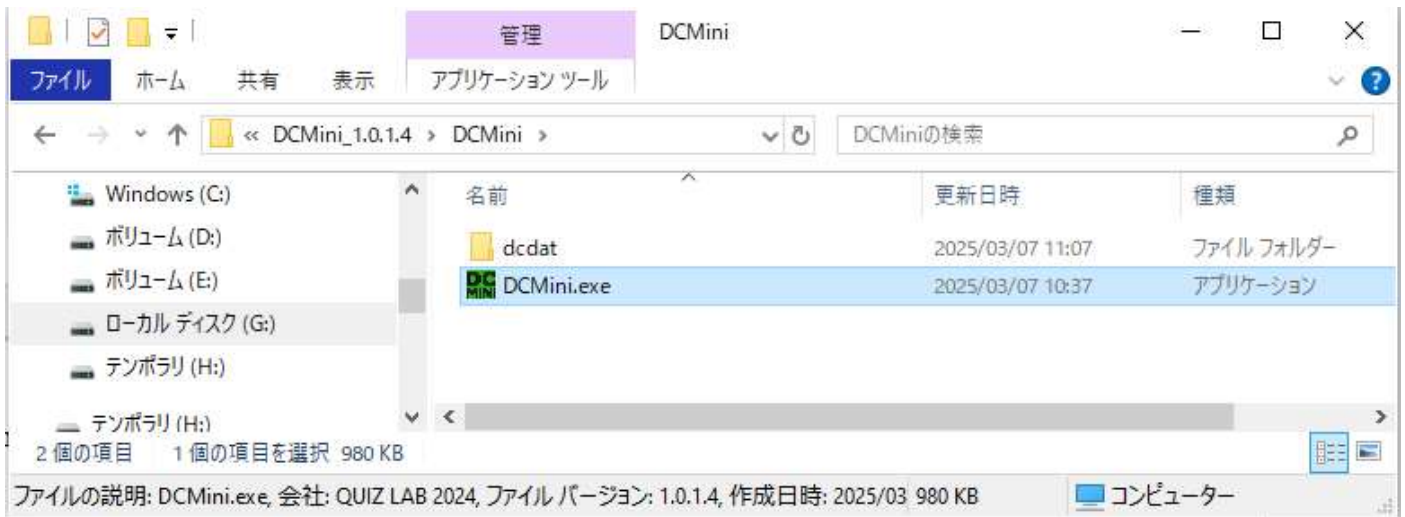
Sorry we're Japanese language OS.



Move the extracted folder to any location.

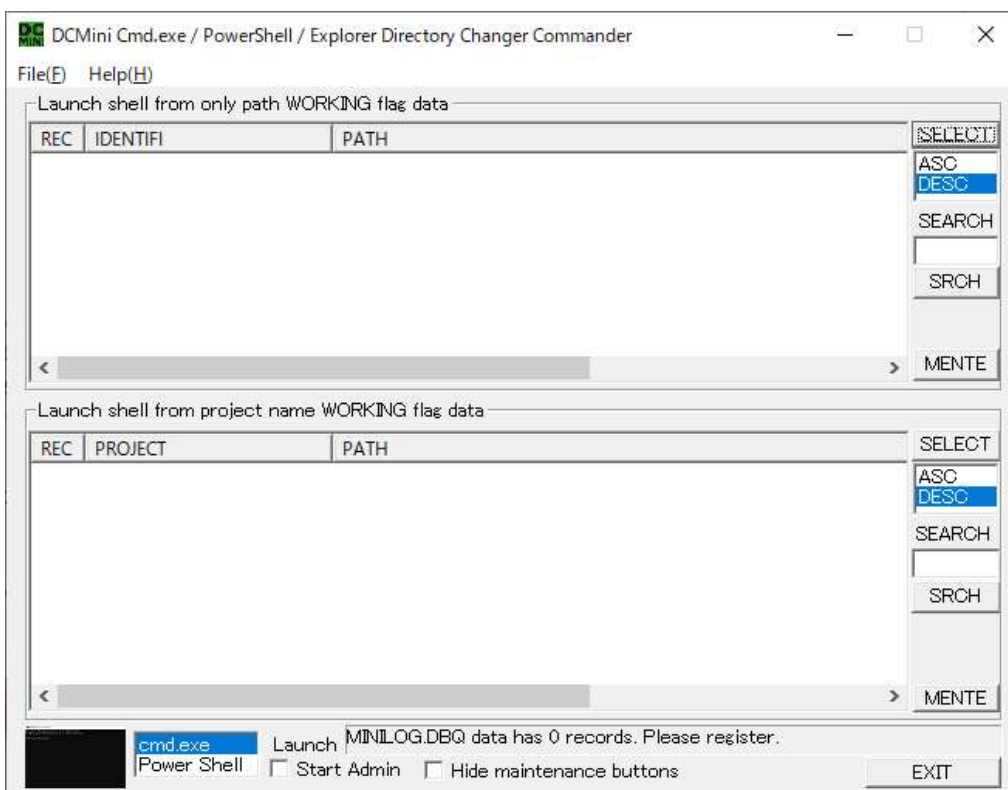
Example: Paste it from temporary to G:¥QUIZLAB

Open the folder at that location.



Note: The dcdat folder contains the database file that stores the ListView rows and the initial configuration file. DCMMini.exe and the configuration of this dcdat folder are required for startup and operation.

Double-click DCMMini.exe to launch it.



Once it starts, the installation is complete.

You can easily start it by right-clicking on DCMMini.exe in the installed location and pinning it to the taskbar.

For operation instructions, refer to DCMMini.pdf.

DCMini.pdf can be opened from the HELP menu of DCMMini.exe.

If you want to start the program in English mode, please check English mode set in FILE-OPTION and restart the program.

DCMini option setting

General options | DBQ Utility

☒ Quit without confirmation [ESC] also

☐ Don't show tooltips

☐ Do not confirm addition/modification/deletion of data files

☐ Make PowerShell the default shell

☒ English mode set

☐ Hide MENTE buttons

Start position

BTM RIGHT

TL	TM	TR
ML	MM	MR
BL	BM	BR

Win Pos

Changed values other than quitting with [ESC] will be reflected from the next startup

OK CANCEL APPLY