

MultiWindowBrowser User Manual



"MultiWindowBrowser" is a feature-rich multi-browser application for Windows that allows you to manage and operate multiple browser screens simultaneously within a single window.

1. Overview

This software supports up to 6 split-screen layouts, enabling independent browsing in each view.

- **Primary Use Cases:** Managing multiple accounts simultaneously, watching multiple live streams at once, multitasking with reference materials, monitoring multiple websites, etc.
- **Independence:** Each view has independent cookies and cache, allowing you to log in to different accounts simultaneously.

2. Software Type (Shareware)

This software is **shareware**.

- **Price:** 660 JPY (including tax)
- **Payment Method:** Please pay via **Vector ShareReg**.
- **Trial Restrictions:**
 - In an unregistered state, a trial dialog will appear at startup, and the software can be used for 15 minutes.
 - Registering a license key will remove these restrictions.

3. System Requirements

- **Supported OS:** Windows 10 / 11 (64bit)
- **Required Components:**
 - **Microsoft Edge WebView2 Runtime:** If not installed, please download and install it from the Microsoft Official Website (<https://developer.microsoft.com/en-us/microsoft-edge/webview2/>).
 - **.NET 8.0 Runtime:** Required for operation. Please download and install it from the Microsoft Official Website (<https://dotnet.microsoft.com/download/dotnet/8.0>).

4. Installation and Uninstallation

- **Installation:** Run the included installer (MWB_Setup.exe) and follow the on-screen instructions to complete the installation.

- **Uninstallation:** Go to Windows **"Settings"** > **"Apps"** > **"Installed Apps"** (or **"Add or remove programs"**), select **"MultiWindowBrowser,"** and perform the uninstallation.

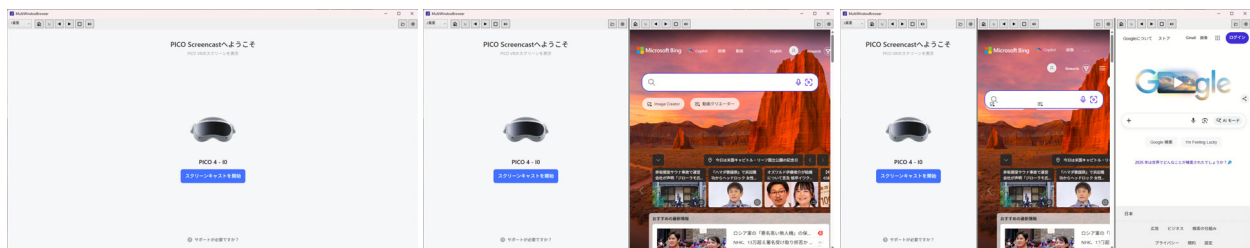
5. Contact Information

For questions, bug reports, or feature requests, please contact us at the following email address:

- **Email:** kuni.matsui.biz@gmail.com

6. Detailed Features

Multi-View Display



- **1 to 6 Screen Layout Switching**
 - 1-Screen Mode: Full-screen display of the selected browser.
 - 2-Screen Mode: Display two browsers side-by-side (Vertical/Horizontal).
 - 3-Screen Mode: Display three browsers side-by-side (Vertical/Horizontal).
 - 4-Screen Mode: 2x2 grid display of four browsers.
 - 6-Screen Mode: 3x2 grid display of six browsers.
- **Resizable Splitters**
 - Freely adjust the display area of each browser.

Individual Browser Functions

Each browser view is equipped with the following features:

- **Basic Navigation**
 - Back, Forward, Reload
 - Home button (moves to the configured URL)
- **Maximize Function**
 - One-click full-screen display of the selected browser.
 - Click again to restore the original layout.
- **Audio Control**
 - Individually mute/unmute each browser.

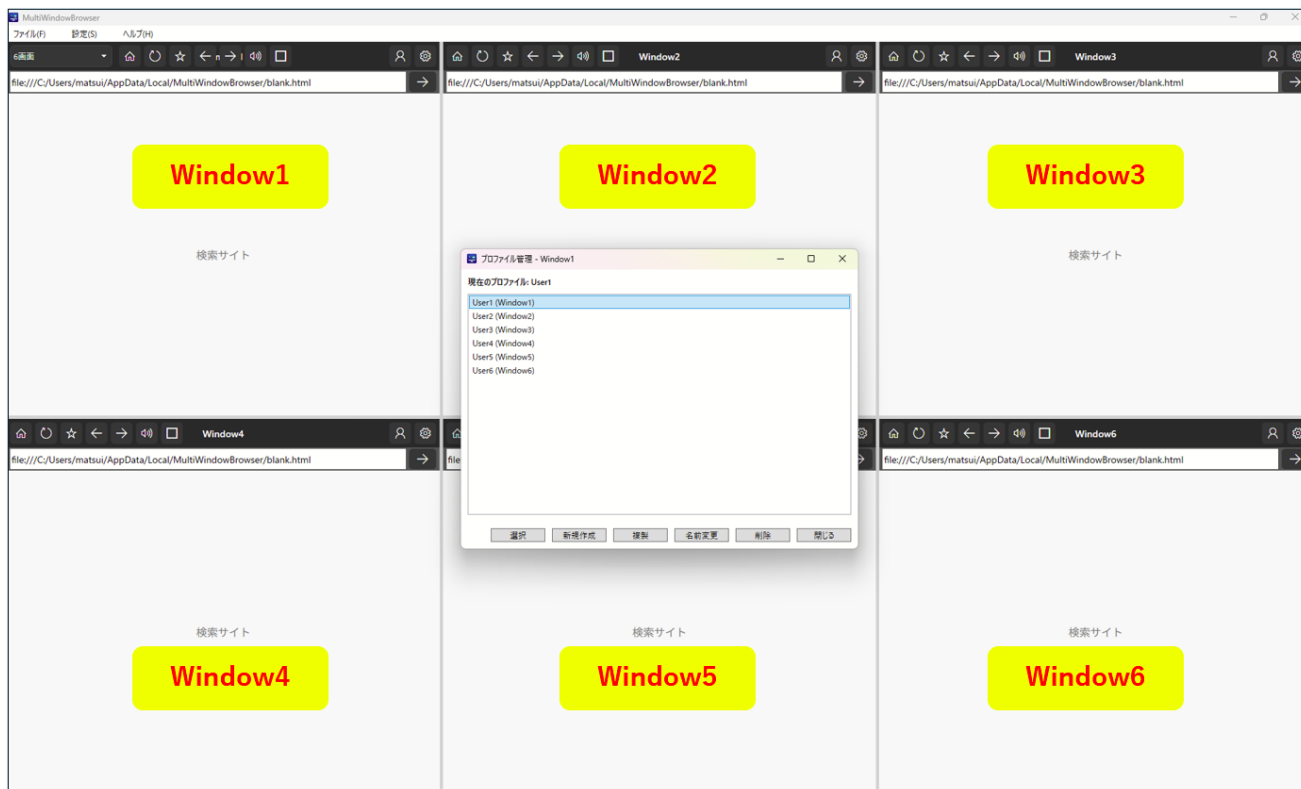
Profile Management

- **Save:** Save current URL, window name, and environment settings as a profile.
- **Load:** Quickly load from saved profiles (settings are reflected immediately).
- **Create and Auto-Switch:** Enter a name in a dedicated dialog to create a new profile and automatically switch to it.
- **Rename:** Change profile names (automatically changes the corresponding data folder name).
- **Duplicate:** Clone an existing profile (copies data folders such as cookies and cache).
- **Delete:** Remove unnecessary profiles.
- **Auto-Restore:** Automatically restore the profile used in each window when the app starts. Multiple profiles can be managed

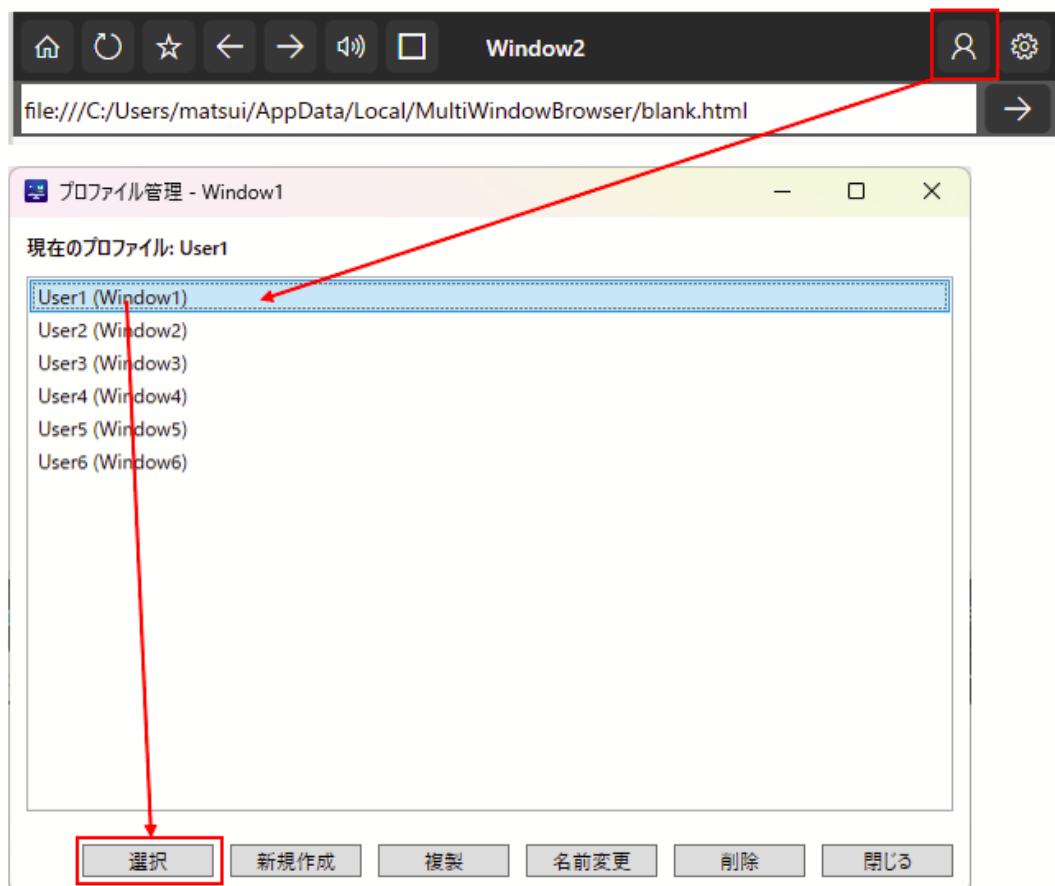
and switched depending on your needs.

【How to Use】

- Select the profile button located in each window.



- Select and assign the profile to be used for each window.



- **Hierarchical Support:** Organize bookmarks by creating folders.
- **Drag & Drop:** Intuitively move or reorder bookmarks.
- **Import Features:**
 - **CSV Import:** Batch import in simple CSV format.
 - **HTML Import:** Supports bookmark files exported from browsers like Chrome or Edge (maintaining folder hierarchy).

Browser-Specific Settings

The following settings can be configured for each browser view:

- **Home URL Setting:** Specify the URL to navigate to with the Home button.
- **Window Name:** Set a custom name for the title bar of each browser.
- **Show Name in Full Screen:** Choose whether to show the window name in F11 full-screen mode.
- **Force Video Maximize:** Toggle the feature to forcibly fit content to the window size on specific video sites. *These settings are saved in association with the current profile.*

Application-Wide Settings

- **Language Settings:** Choose between Japanese and English for the application's display language.
- **Theme Settings:** Switch between Light and Dark themes.

Independent User Data

- Each browser view uses an independent user data folder.
- Allows simultaneous login to different accounts.
- Sessions, cookies, and browsing history are all independent.

Automatic State Saving

The following information is automatically saved when the application is closed:

- Window position and size
- Selected layout (1 to 6 screens)
- Profiles used by each browser (data folders)
- Displayed URL of each browser
- Home URL settings
- Window names
- Full-screen name display settings
- Force video maximize settings

The previous state will be restored on the next startup.

Full Screen Mode

- **F11 Key:** Toggle full-screen mode ON/OFF.
- Depending on settings, you can choose to display only the window name or a completely immersive view.

7. Technical Specifications

- **Framework:** .NET / WPF
- **Browser Engine:** Microsoft WebView2 (Chromium-based)

8. Disclaimer

The author assumes no responsibility for any damages resulting from the use of this software. Please use it at your own risk.